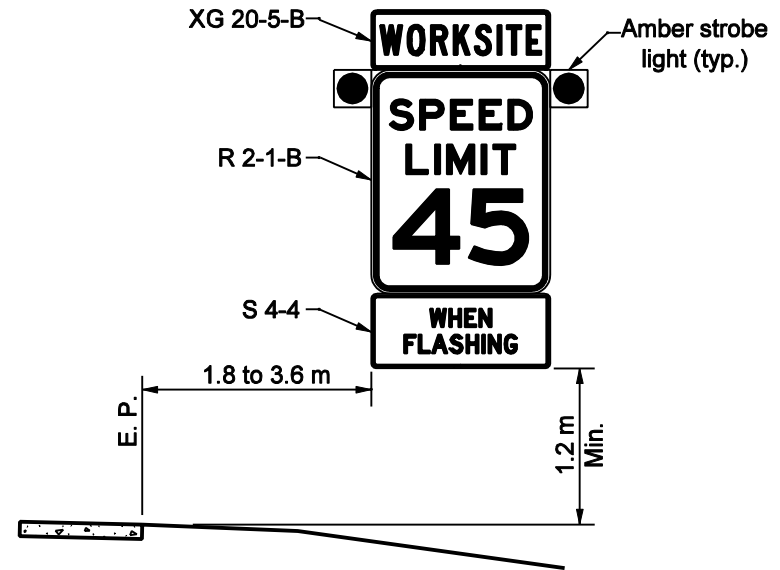
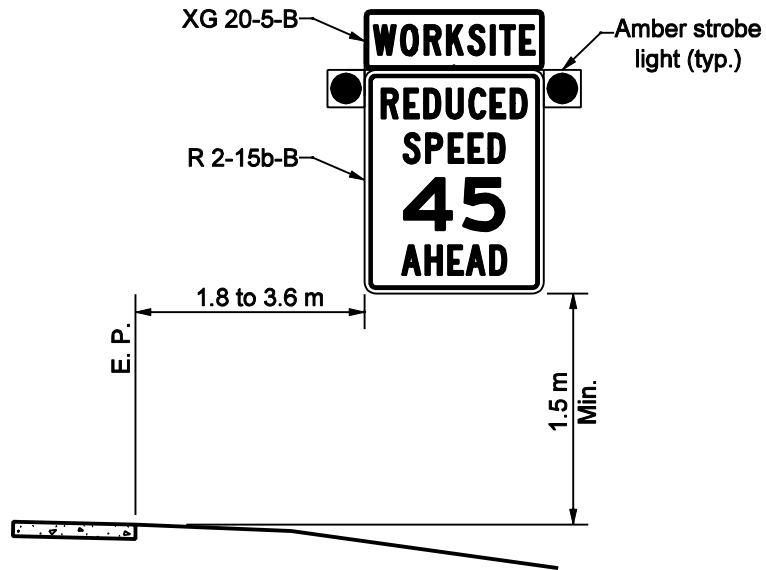


General Notes:

1. Signs and supports shall meet NCHRP 350 crash evaluation criteria, if not trailer mounted.



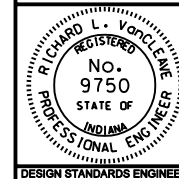
All Dimension are in mm unless otherwise specified

INDIANA DEPARTMENT OF TRANSPORTATION

**WORKSITE SPEED LIMIT
SIGN ASSEMBLY**

SEPTEMBER 2002

STANDARD DRAWING NO. 801-TCDV-10



/s/ Richard L. VanCleave 9-03-02
DESIGN STANDARDS ENGINEER DATE

/s/ Richard K. Smutzer 9-03-02
CHIEF HIGHWAY ENGINEER DATE

DESIGN STANDARDS ENGINEER