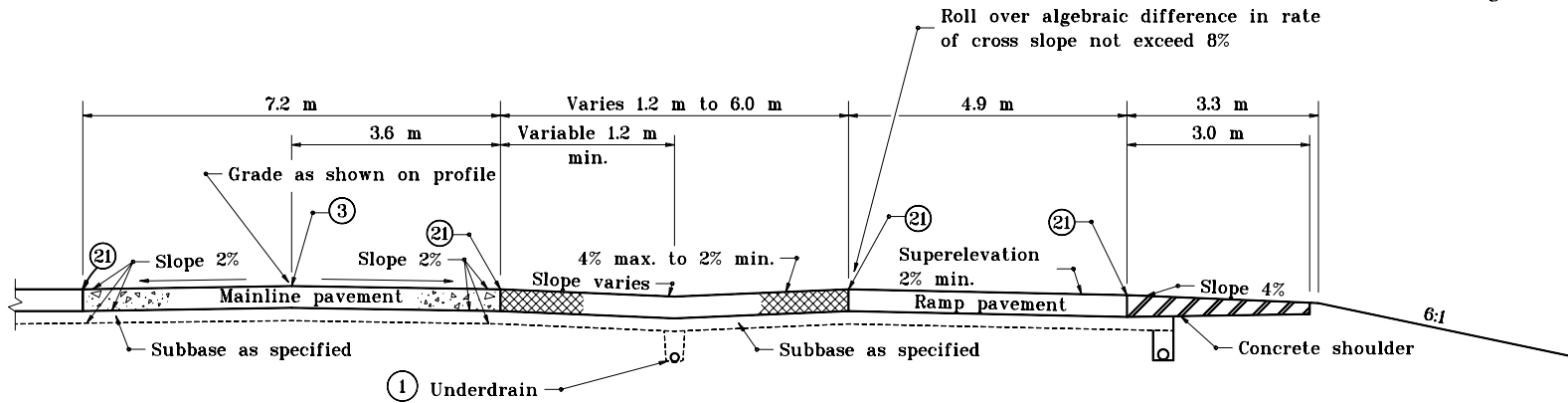
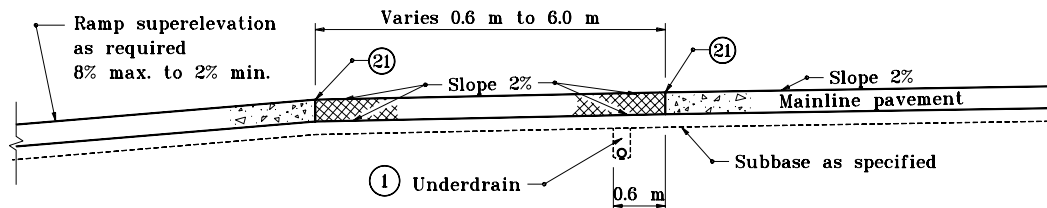


GENERAL NOTES

- ① For underdrain details see Standard Drawing 718-UNDR-01.



SECTION A-A



SECTION B-B

LEGEND

- Ⓐ Pavement type and thickness as specified for the mainline.
- Ⓑ Pavement type and thickness as specified for ramps.
- ③ Longitudinal joint
- ② Longitudinal construction joint
- ▨ Concrete shoulder (Thickness of mainline pavement)
- ▧ Concrete shoulder (Thickness as specified on Typical Sections)

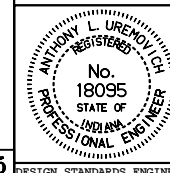
All dimensions are in mm unless otherwise specified.

INDIANA DEPARTMENT OF TRANSPORTATION

**RAMP CROSS SECTIONS
CONCRETE SHOULDERS**

JANUARY 1999

STANDARD DRAWING NO. 501-RECS-03



/s/ Anthony L. Uremovich 1-04-99
DESIGN STANDARDS ENGINEER DATE

/s/ Donald W. Lucas 1-04-99
CHIEF HIGHWAY ENGINEER DATE

Source Sheet: MV5

DESIGN STANDARDS ENGINEER