

| TYPE OF ROADWAY | INTERSTATE AND DIVIDED HIGHWAY WITH SHOULDER, RURAL & URBAN | DIVIDED HIGHWAY WITH CURB, RURAL & URBAN | NON-DIVIDED HIGHWAY, RURAL OR CITY STREET | NON-DIVIDED HIGHWAY, URBAN |
|--|---|--|---|--|
| CLEARANCE | | | | |
| VERTICAL: EDGE OF TRAVELED WAY PAVEMENT TO BOTTOM OF SIGN OR SIGNS | 7 ft TO 7.5 ft ① | 7 ft TO 7.5 ft ② | 5 ft TO 5.5 ft ④, ② | 7 ft TO 7.5 ft ② |
| HORIZONTAL: EDGE OF TRAVELED WAY PAVEMENT TO EDGE OF SIGN OR SIGNS | 12 ft min. or 6 ft min. from the shoulder, whichever is greater | 6 ft min. ③ | 12 ft min. or 6 ft min. from the shoulder, whichever is greater | 12 ft min. or 6 ft min. from the shoulder, whichever is greater ③ |

NOTES:

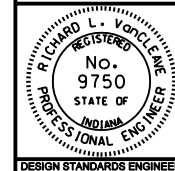
- ① If a secondary sign is mounted below another sign, the secondary sign shall be installed at least 5 ft. above the level of the pavement edge.
- ② The height to the bottom of a secondary sign mounted below another sign may be 1 ft. less than the height specified above.
- ③ In urban areas where lateral offsets are limited, a minimum lateral offset of 2 ft. may be used. A minimum offset of 1 ft. from the face of the curb may be used in urban areas where sidewalk width is limited or where existing poles are close to the curb.
- ④ Where parking or pedestrian movements occur on an expected recurring basis, the clearance to the bottom of the sign shall be at least 7 ft.

INDIANA DEPARTMENT OF TRANSPORTATION

**HORIZONTAL AND VERTICAL
SHEET SIGN CLEARANCE**

SEPTEMBER 2003

STANDARD DRAWING NO. E 802-SNPL-02



/s/ Richard L. VanCleave 9-02-03
DESIGN STANDARDS ENGINEER DATE

/s/ Richard K. Smutzer 9-02-03
CHIEF HIGHWAY ENGINEER DATE

DESIGN STANDARDS ENGINEER