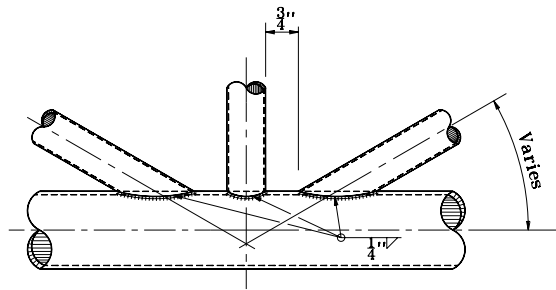
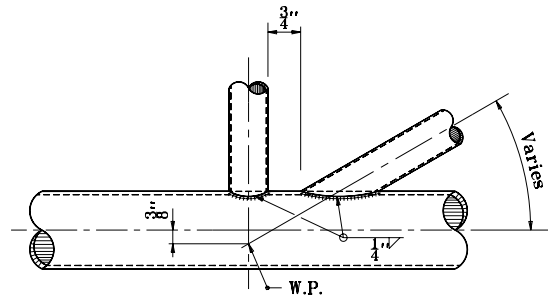


GENERAL NOTES

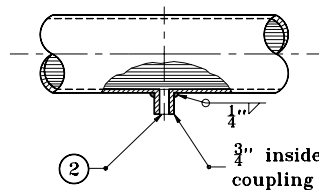
1. All bracing members shall be machined to provide a snug fit to the chord members along the entire edge of bracing members before welding.
- ② Drill 1" in. dia. hole in chord-round edges.



**DETAIL A
PANEL CONNECTION**

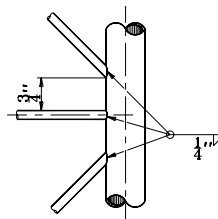


**DETAIL B
PANEL CONNECTION**



**DETAIL C
WIRE OUTLET**

② 3/4" inside diameter aluminum coupling welded into hole in chord



TYPICAL WELD DETAIL

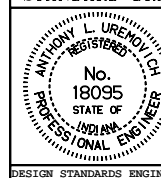
INDIANA DEPARTMENT OF TRANSPORTATION

ALUMINUM STRUCTURE

DETAILS

SEPTEMBER 2001

STANDARD DRAWING NO. E 802-SNOH-05



/s/ Anthony L. Uremovich 9-04-01
DESIGN STANDARDS ENGINEER DATE

/s/ Firooz Zandi 9-04-01
CHIEF HIGHWAY ENGINEER DATE

DESIGN STANDARDS ENGINEER