

SIGN NUMBER	SIGN MESSAGE	POST DESIGN		SIGN SIZE	SIGN COLOR		BORDER WIDTH	MARGIN WIDTH	LETTER HEIGHT SERIES-LINE 1	LETTER HEIGHT SERIES-LINE 2	LETTER HEIGHT SERIES-LINE 3	WORD OR LINE ①	PCT. ①	ARROW SIZE		CORNER RADIUS	NUMBER OF POSTS	
		4 x 4 WOOD	STEEL		BACKGROUND	COPY								HEAD	SHAFT		ONE	TWO
XG20-1	"Road Construction Next _____ Miles"	*	B	60 x 36	Orange	Black	3/4	1/2	6 - Series C	6 - Series C	6 - Series C					2 1/4		X
XG20-2	"End Construction"	*	B	60 x 24	Orange	Black	1/2	3/8	6 - Series C	6 - Series C	6 - Series C					1 1/2		X
XG20-2a	"End Road Work"	*	B	48 x 18	Orange	Black	1/2	3/8	6 - Series C	6 - Series C	6 - Series C					1 1/2		X
XG20-4	"Pilot Car Follow Me"	---	B	36 x 18	Orange	Black	1/2	3/8	5 - Series C	5 - Series C						1 1/2		X
XG20-5	(Route number or) " _____ Lane Closed" (date)	---	B	48 x 36	Orange	Black	3/4	1/2	6 - Series C	6 - Series C	6 - Series C					2 1/4		X
XG20-5-B	"Worksite" plate	---	B	48 x 16	Orange	Black	1/2	3/8	8 - Series C							1 1/2		---
XM4-9 (R or L)	"Detour" (above black arrow)	*	A	30 x 24	Orange	Black	1/2	3/8	5 - Series D							1 1/2		X
XM4-9-B (R or L)	"Detour" (above black arrow)	*	B	60 x 48	Orange	Black	1 1/4	3/8	10 - Series D							3		X
XM4-10 (R or L)	"Detour" (inside orange arrow)	*	B	48 x 18	Black & Orange	Black	---	3/8	6 - Series D							1 1/2		X
XW1-1-A (R or L)	(Turn symbol)	*	A	36 x 36	Orange	Black	3/4	1/2								2 1/4		X
XW1-1-B (R or L)	(Turn symbol)	*	B	48 x 48	Orange	Black	1 1/4	3/4								3		X
XW1-2-A (R or L)	(Curve symbol)	*	A	36 x 36	Orange	Black	3/4	1/2								2 1/4		X
XW1-2-B (R or L)	(Curve symbol)	*	B	48 x 48	Orange	Black	1 1/4	3/4								3		X
XW1-3-A (R or L)	(Reverse turn symbol)	*	A	36 x 36	Orange	Black	3/4	1/2								2 1/4		X
XW1-3-B (R or L)	(Reverse turn symbol)	*	B	48 x 48	Orange	Black	1 1/4	3/4								3		X
XW1-4-A (R or L)	(Reverse curve symbol)	*	A	36 x 36	Orange	Black	3/4	1/2								2 1/4		X
XW1-4-B (R or L)	(Reverse curve symbol)	*	B	48 x 48	Orange	Black	1 1/4	3/4								3		X
XW1-6	(Single headed arrow)	*	B	48 x 24	Orange	Black	3/4	3/4								1 1/2		X
XW1-6-A	(Single headed arrow)	*	B	60 x 30	Orange	Black	3/4	1/2								2 1/4		X
XW4-2 (R or L)	(Lane ends merge _____ symbol)	*	A	36 x 36	Orange	Black	3/4	1/2	See Standard Sheet 3A Detours							2 1/4		X
XW4-2-A (R or L)	(Lane ends merge _____ symbol)	*	B	48 x 48	Orange	Black	1 1/4	3/4	See Standard Sheet 3A Detours							1 1/2		X
XW6-2a-A	(Divided highway ends symbol)	*	A	36 x 36	Orange	Black	3/4	1/2	5 - Series D	5 - Series D	5 - Series D					3		X
XW6-2a-B	(Divided highway ends symbol)	*	B	48 x 48	Orange	Black	1 1/4	3/4	7 - Series D	7 - Series D	7 - Series D					3		X
XW6-3-B	(Two way traffic symbol)	*	B	48 x 48	Orange	Black	1 1/4	3/4								3		X
XW8-1-A	"Bump"	*	A	36 x 36	Orange	Black	3/4	1/2	10 - Series D					11 5/8 x 13 3/4	23 1/2 x 6	2 1/4		X
XW8-1-B	"Bump"	*	B	48 x 48	Orange	Black	1 1/4	3/4	12 - Series D							3		X
XW8-2-A	"Dip"	*	A	36 x 36	Orange	Black	3/4	1/2	10 - Series E							2 1/4		X
XW8-2-B	"Dip"	*	B	48 x 48	Orange	Black	1 1/4	3/4	12 - Series E							3		X
XW8-3-A	"Pavement Ends"	*	A	36 x 36	Orange	Black	3/4	1/2	6 - Series C	6 - Series C						2 1/4		X
XW8-4-A	"Soft Shoulder"	*	A	36 x 36	Orange	Black	3/4	1/2	6 - Series C	6 - Series C						2 1/4		X
XW8-4-B	"Soft Shoulder"	*	B	48 x 48	Orange	Black	1 1/4	3/4	8 - Series C	8 - Series C						3		X
XW8-6-A	"Truck Crossing"	*	A	36 x 36	Orange	Black	3/4	1/2	6 - Series C	6 - Series C						2 1/4		X
XW8-6-B	"Truck Crossing"	*	B	48 x 48	Orange	Black	1 1/4	3/4	8 - Series C	8 - Series C						3		X
XW9-1-A (R or L)	" _____ Lane Ends"	*	A	36 x 36	Orange	Black	3/4	1/2	6 - Series D	6 - Series D	6 - Series D					2 1/4		X
XW9-1-B (R or L)	" _____ Lane Ends"	*	B	48 x 48	Orange	Black	1 1/4	3/4	8 - Series D	8 - Series D	8 - Series D					3		X
XW9-2-A (R or L)	"Lane Ends Merge _____"	*	B	48 x 48	Orange	Black	1 1/4	3/4	6 - Series D	6 - Series D	6 - Series D					2 1/4		X
XW12-1-C	(Double headed arrow)	*	B	48 x 48	Orange	Black	1 1/4	3/4								3		X
XW13-1-A	" _____ MPH" (Advisory speed plate)	*	A	24 x 24	Orange	Black	1/2	3/8	10 - Series E	4 - Series E						1 1/2		---
XW20-1	"Road Construction Ahead"	*	B	48 x 48	Orange	Black	1 1/4	3/4	7 - Series C	7 - Series C	7 - Series C	"Construction"	25			3		X
XW20-1-A	"Road Construction Ahead"	*	B	60 x 60	Orange	Black	1 1/2	1	8 - Series C	8 - Series C	8 - Series C	"Construction"	25			95		X
XW20-1a	"Road Repairs Next _____ Miles"	*	B	48 x 48	Orange	Black	1 1/4	3/4	8 - Series C	8 - Series C	8 - Series C	6 - Series C				3		X
XW20-2	"Detour Ahead"	*	B	48 x 48	Orange	Black	1 1/4	3/4	8 - Series D	8 - Series D		"Detour"	25			3		X
XW20-3	"Road Closed Ahead"	*	B	48 x 48	Orange	Black	1 1/4	3/4	7 - Series D	7 - Series D	7 - Series D					3		X
XW20-4	"One Lane Road Ahead"	*	B	48 x 48	Orange	Black	1 1/4	3/4	7 - Series C	7 - Series C	7 - Series C					3		X
XW20-5 (R, C, or L)	" _____ Lane Closed Ahead"	*	B	48 x 48	Orange	Black	1 1/4	3/4	8 - Series C	6 - Series C	6 - Series C	"Center Lane"	2			3		X
XW20-7a-A	(Flagger symbol)	*	B	48 x 48	Orange	Black	1 1/4	3/4								1 1/2		X
XW21-1a	(Workers symbol)	*	A	36 x 36	Orange	Black	3/4	1/2	6 - Series D							2 1/4		X
XW21-2	"Fresh Oil"	*	A	30 x 30	Orange	Black	3/4	3/8	6 - Series D	6 - Series D		"Fresh"	2/4			1 7/8		X
XW21-2-A	"Fresh Oil"	*	A	36 x 36	Orange	Black	3/4	1/2	7 - Series D	7 - Series D		"Fresh"	3/4			2 1/4		X
XW21-3-A	"Road Machinery Ahead"	*	B	48 x 48	Orange	Black	1 1/4	3/4	7 - Series D	7 - Series D	7 - Series D	"Machinery"	25			3		X
XW21-4-A	"Road Work Ahead"	*	B	48 x 48	Orange	Black	1 1/4	3/4	7 - Series D	7 - Series D	7 - Series D					3		X
XW21-5-A	"Shoulder Work"	*	A	36 x 36	Orange	Black	3/4	1/2	6 - Series C	6 - Series C		"Shoulder"	1			2 1/4		X
XW21-6-A	"Survey Crew"	*	A	36 x 36	Orange	Black	3/4	1/2	6 - Series C	6 - Series C						2 1/4		X

\* Wood post permitted.

**GENERAL NOTES**

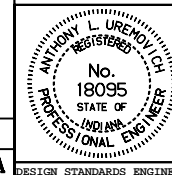
- ① Spacing between letters of this word or line shall be reduced by this percentage as shown in the FHWA document, Standard Highway Sign.
2. See Standard Drawing E 801-TCSN-11 for additional general notes.
3. All dimensions are in inches.

INDIANA DEPARTMENT OF TRANSPORTATION

**SIGN DESIGN DETAILS**

SEPTEMBER 1999

STANDARD DRAWING NO. E 801-TCSN-12



/s/ Anthony L. Uremovich 9-01-99  
DESIGN STANDARDS ENGINEER DATE

/s/ Donald W. Lucas 9-01-99  
CHIEF HIGHWAY ENGINEER DATE

Source Sheet: Det3A,  
Source Sheet: Det5, 5A

DESIGN STANDARDS ENGINEER