

NOTES:

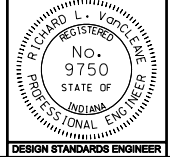
- ① See Standard Drawings E 706-BCBR-01 or 02 for concrete railing details.
2. Location of transverse joints in reinforced concrete moment slab and railing shall be same as in adjoining PCCP.
- ③ See Standard Drawing E 706-BRRW-05 for plan view and additional vertical reinforcing steel in the reinforced concrete railing at the railing joints.
- ④ Increased depth for moment slab thickness greater than 15".
5. Thickness of reinforced concrete moment slab shall match that of adjoining PCCP, but not less than a 12" minimum.
6. The detail shown on this drawing shall be used within the limits of MSE wall only.

INDIANA DEPARTMENT OF TRANSPORTATION

RAILING AND MOMENT SLAB ON MSE WALL - PCCP

SEPTEMBER 2006

STANDARD DRAWING NO. E 706-BRRW-03



/s/ Richard L. VanCleave 9-01-06
DESIGN STANDARDS ENGINEER DATE

/s/ Richard Smutzer 9-01-06
CHIEF HIGHWAY ENGINEER DATE

DESIGN STANDARDS ENGINEER