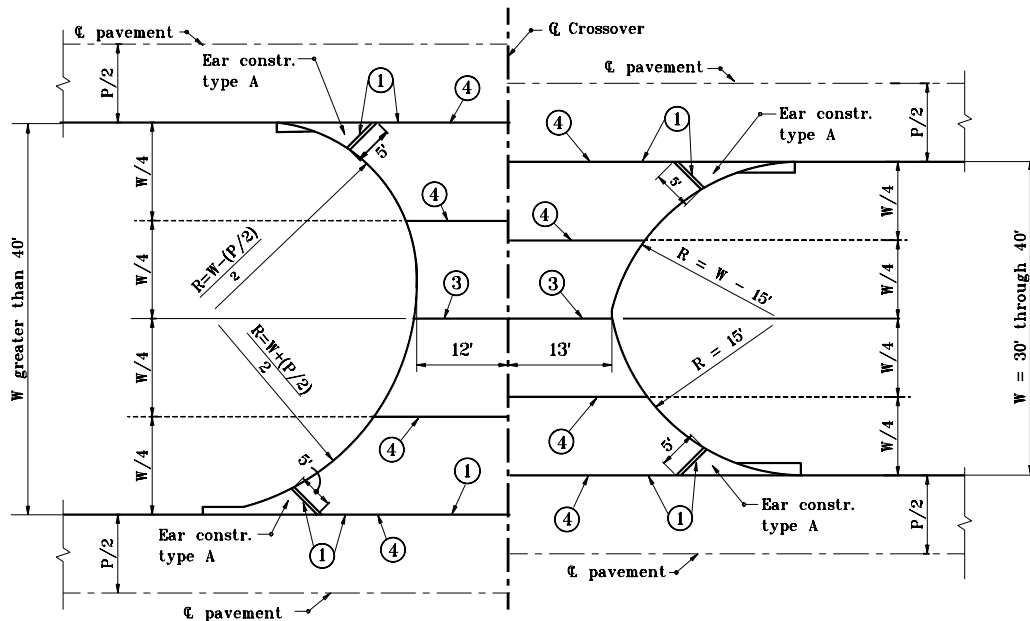


**COMMERCIAL DRIVE CROSSOVER PLAN FOR  $W = 8'$  to less than  $30'$**



**COMMERCIAL DRIVE CROSSOVER PLAN FOR  $W = 30'$  to over  $40'$**

**NOTES :**

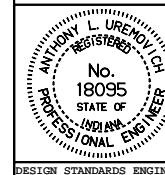
- ① Thickened edge
2. See Standard Drawings :  
E 605-ERCN-01 for TYPE "A" ear construction  
E 605-ERCN-02 for TYPE "B" ear construction
- ③ Contraction joint type D-1, see Standard Drawing E 503-CCPJ-01 for details.
- ④ Keyway construction joint - see Drawing E 610-DRIV-16 for details.
6. Grade and cross section for commercial drive crossover shall be the same as for private drive crossover, except that the HMA Intermediate 19 mm, Mainline shall be 660#/syd.  
For cross sections see Standard Drawing E 610-DRIV-18.
- ⑦ Integral concrete curb, see Standard Drawing E 605-CCIN-01 for details.
8. Commercial drive crossover shall be constructed of a flexible section unless otherwise directed by the Engineer.

INDIANA DEPARTMENT OF TRANSPORTATION

**COMMERCIAL DRIVE CROSSOVERS  
PLANS**

JANUARY 2000

STANDARD DRAWING NO. **E 610-DRIV-19**



/s/ Anthony L. Uremovich 1-03-00  
DESIGN STANDARDS ENGINEER DATE

/s/ Firooz Zandi 1-03-00  
CHIEF HIGHWAY ENGINEER DATE

DESIGN STANDARDS ENGINEER