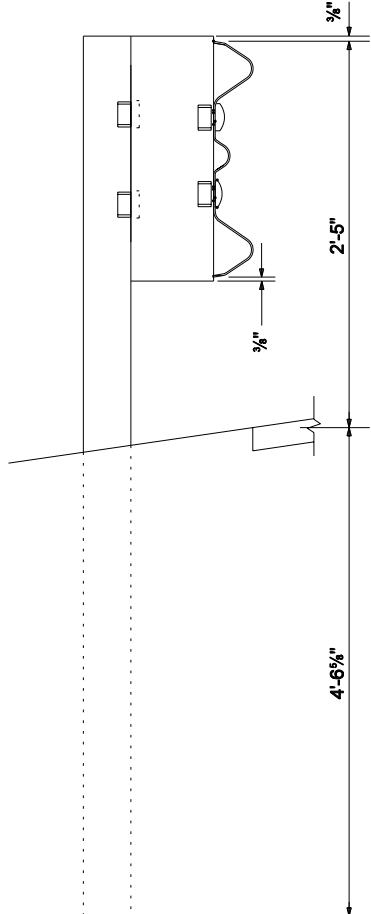


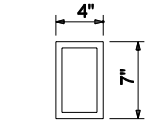
FRONT VIEW

BACK VIEW

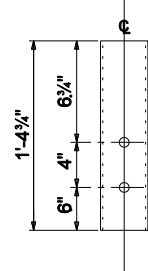
W 6 x 9 POST DETAILS



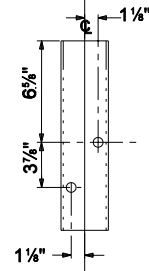
SIDE VIEW



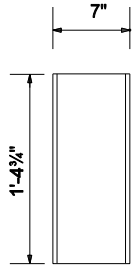
TOP VIEW



FRONT VIEW



BACK VIEW



SIDE VIEW

TS 7 x 4 x 3/16" BLOCK DETAILS

NOTE:

1. All holes drilled or punched to 3/4" dia.
2. For post numbers, see Standard Drawing E 601-TTGB-01.
3. Hole pattern for posts numbers 1 thru 7 may be drilled in back flange. See Standard drawing E 601-TTGB-03

POST 8

| | |
|---|--|
| INDIANA DEPARTMENT OF TRANSPORTATION | |
| GUARDRAIL TRANSITION TYPE TGB MARCH 2004 | |
| STANDARD DRAWING NO. E 601-TTGB-04 | |
| | /s/ Richard L. VanCleave 3-01-04 DESIGN STANDARDS ENGINEER DATE |
| | /s/ Richard K. Smutzer 3-01-04 CHIEF HIGHWAY ENGINEER DATE |
| DESIGN STANDARDS ENGINEER | |