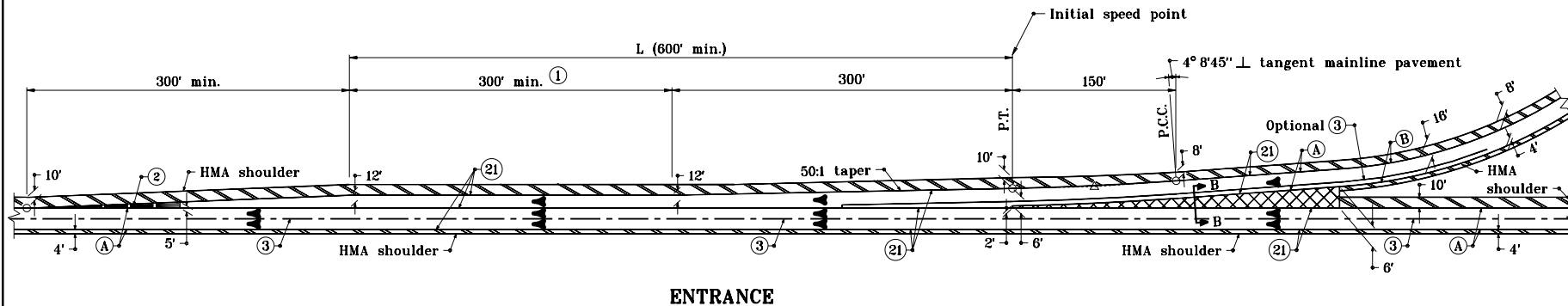


GENERAL NOTES

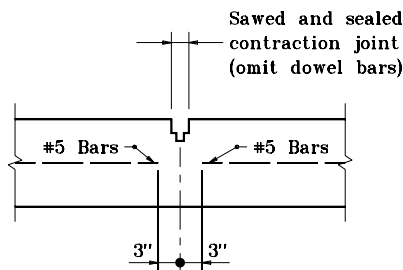
- ① Required additional length of L above the 600' minimum shall be added to the length of this parallel lane segment. (Example: If required L = 720', then this parallel lane segment length = 420'). See tables on Standard Drawing E 401-REBS-04.
- ② Ear construction type A: 2 lines of #5 bars required (Est. weight = 255 lb). Transverse sawed and sealed joint, in line with pavement contraction joint, shall extend through ear construction. The #5 bars shall be discontinued at such joints. See Detail B-B.
- 3. See Standard Drawing E 401-REBS-03 for Section B-B.

CURVE DATA

R = 2864.79'
 Δ = 3°00'00"
 T = 75.02'
 L = 150'
 E = 0.98'



ENTRANCE



DETAIL B-B

LEGEND

- (A) Pavement type and thickness as specified for the mainline.
- (B) Pavement type and thickness as specified for ramps.
- (3) Longitudinal joint
- (21) Longitudinal construction joint
- [Cross-hatched pattern] HMA shoulder (Thickness of mainline pavement)
- [Diagonal hatched pattern] HMA shoulder (Thickness as specified on Typical Sections)

INDIANA DEPARTMENT OF TRANSPORTATION	
RAMP ENTRANCE TERMINAL HMA SHOULDER	
SEPTEMBER 1999	
STANDARD DRAWING NO. E 401-REBS-01	
	DETAILS PLACED IN THIS FORMAT 11-15-99
/s/ Anthony L. Uremovich DESIGN STANDARDS ENGINEER	11-15-99 DATE
/s/ Firooz Zandi CHIEF HIGHWAY ENGINEER	11-15-99 DATE
DESIGN STANDARDS ENGINEER	ORIGINALLY APPROVED 9-01-99