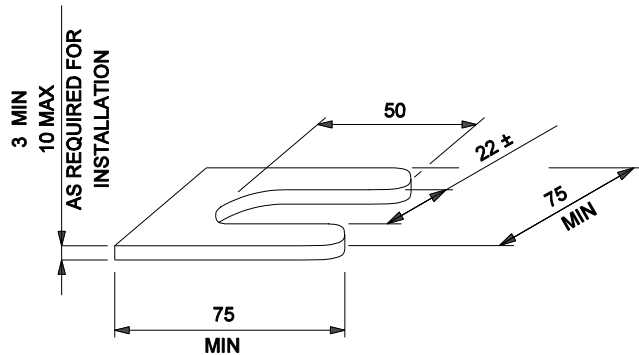


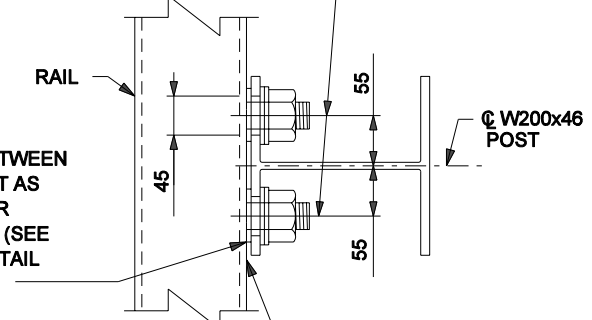
**ANCHOR BAR DETAIL**



**U-WASHER DETAIL**

$\bar{C}$  32x45 SLOTTED HOLE  
IN W200 FLANGE FOR 19 x 60  
LG STUD W/HEX NUT, HARDENED  
CLIPPED WASHER AND LOCK WASHER

U-WASHER BETWEEN  
RAIL AND POST AS  
REQUIRED FOR  
INSTALLATION (SEE  
U-WASHER DETAIL  
THIS SHEET)



SEAL TOP AND SIDES  
OF RAIL-TO-POST  
CONNECTION WITH  
CAULKING COMPOUND  
AFTER INSTALLATION

**RAIL TO POST DETAIL**

**NOTES:**

1. U-WASHER PROVIDED TO ADJUST FOR "FIT" PROBLEMS IN THE FIELD.
2. TIGHTEN POST-RAIL CONNECTIONS TO SNUG TIGHT CONDITION ONLY.
3. PROVIDE ONE U-WASHER PER STUD AS REQUIRED.

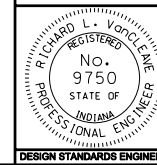
All dimensions are in mm unless otherwise specified

INDIANA DEPARTMENT OF TRANSPORTATION

**CONCRETE BRIDGE  
RAILING TYPE TF-2**

SEPTEMBER 2005

STANDARD DRAWING NO. 706-BRTF-10



/s/ Richard L. VanCleave 9-01-05  
DESIGN STANDARDS ENGINEER DATE

/s/ Richard K. Smutzer 9-01-05  
CHIEF HIGHWAY ENGINEER DATE

DESIGN STANDARDS ENGINEER