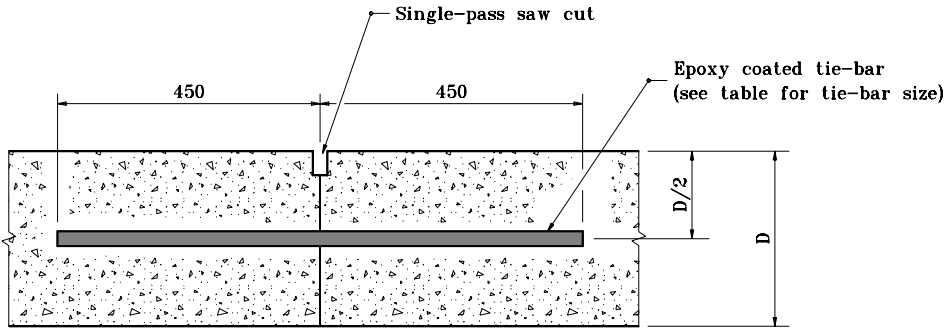
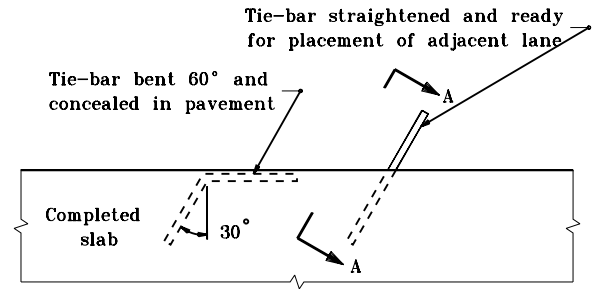


TIE-BAR SIZES FOR LONGITUDINAL CONSTRUCTION JOINT		
Pavement Thickness, D	Tie-Bar Size	Spacing
Less than 225	#16	900 c/c
225 through 300	#19	900 c/c
Greater than 300	#19 or #22	600 c/c 900 c/c



SECTION A-A

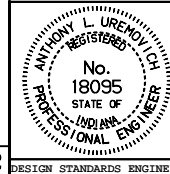


PLAN VIEW

**METHOD OF PLACING TIE-BAR
FOR LONGITUDINAL CONSTRUCTION JOINT**

All dimensions are in mm unless otherwise specified.

INDIANA DEPARTMENT OF TRANSPORTATION
**LONGITUDINAL CONSTRUCTION
 JOINT**
 SEPTEMBER 1999
 STANDARD DRAWING NO. 503-CCPJ-07



/s/ Anthony L. Uremovich 9-01-99
 DESIGN STANDARDS ENGINEER DATE

/s/ Donald W. Lucas 9-01-99
 CHIEF HIGHWAY ENGINEER DATE

Source Sheet: CCPJ2

DESIGN STANDARDS ENGINEER