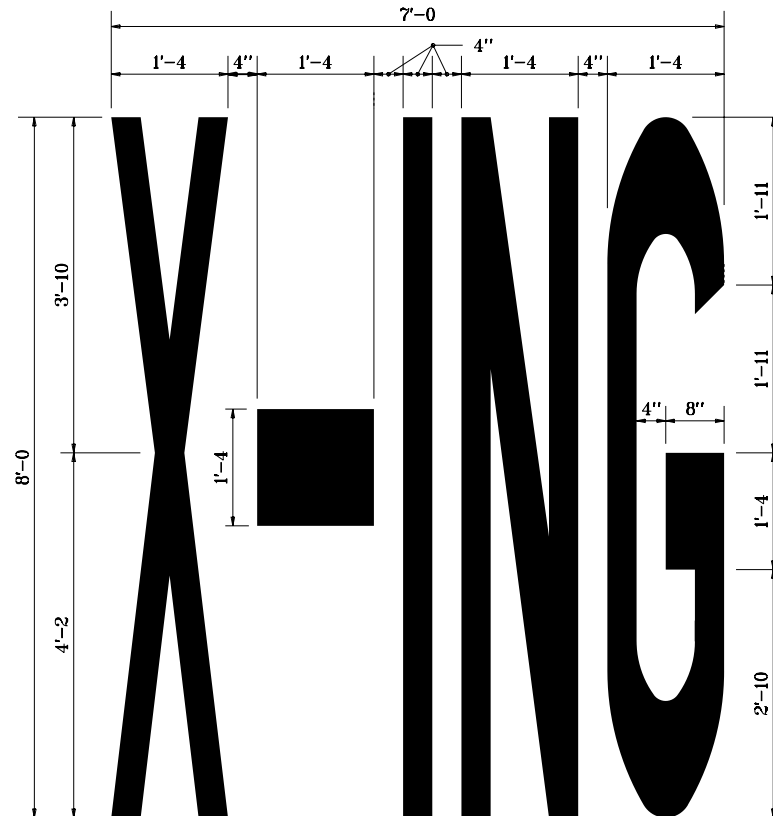


**GENERAL NOTES**

1. Horizontal strokes are 1'-4 wide. vertical strokes are 4" wide.
2. See Standard Drawing E 807-MKPM-04 for Details for "G".

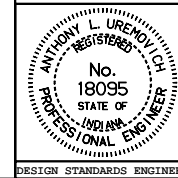


INDIANA DEPARTMENT OF TRANSPORTATION

**TRANSVERSE MARKINGS**

JANUARY 2000

STANDARD DRAWING NO. **E 808-MKPM-05**



/s/ Anthony L. Uremovich 1-03-00  
DESIGN STANDARDS ENGINEER DATE

/s/ Firooz Zandi 1-03-00  
CHIEF HIGHWAY ENGINEER DATE

DESIGN STANDARDS ENGINEER