

DETAIL F
TYPICAL GROUND ROD CONNECTION

LEGEND

- ⊙ — Grounding post
- — Self insulated splicer (insulating link)
- — Unfused connector
- ⊗ — Fused connector
- ▣ — Compression connector

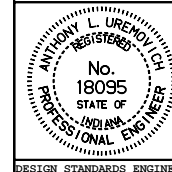
INDIANA DEPARTMENT OF TRANSPORTATION

LIGHTING WIRING DETAILS

JANUARY 1996

STANDARD DRAWING NO. **E 807-LTWR-04**

DETAILS PLACED IN THIS FORMAT 7-27-99



/s/ Anthony L. Uremovich 7-27-99
DESIGN STANDARDS ENGINEER DATE

/s/ Firooz Zandi 7-27-99
CHIEF HIGHWAY ENGINEER DATE

DESIGN STANDARDS ENGINEER

ORIGINALLY APPROVED 1-02-96