

Power cable disconnected  
in tower

Junction box on luminaire  
ring in lowered position

Auxiliary luminaire  
connector

2P, 480 V, 30 A  
circuit breaker

Strain relief  
connectors

4/C #10 AWG Copper  
insulated electrical  
cable to junction box  
on luminaire ring

600 V 30 A rated  
electrical plug-moisture  
resistant

4/C #10 Flexible cable  
or 4-#10 strand wire  
in flexible conduit

Bonding plate

Multiple compression fitting

Insulating link

Ground

**DETAIL**

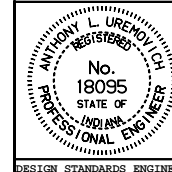
INDIANA DEPARTMENT OF TRANSPORTATION

**HIGHWAY ILLUMINATION  
TOWER BOTTOM LATCH**

MARCH 1995

STANDARD DRAWING NO. **E 807-LTHI-02**

DETAILS PLACED IN THIS FORMAT 11-15-99



/s/ Anthony L. Uremovich 11-15-99  
DESIGN STANDARDS ENGINEER DATE

/s/ Firooz Zandi 11-15-99  
CHIEF HIGHWAY ENGINEER DATE

DESIGN STANDARDS ENGINEER

ORIGINALLY APPROVED 3-01-95