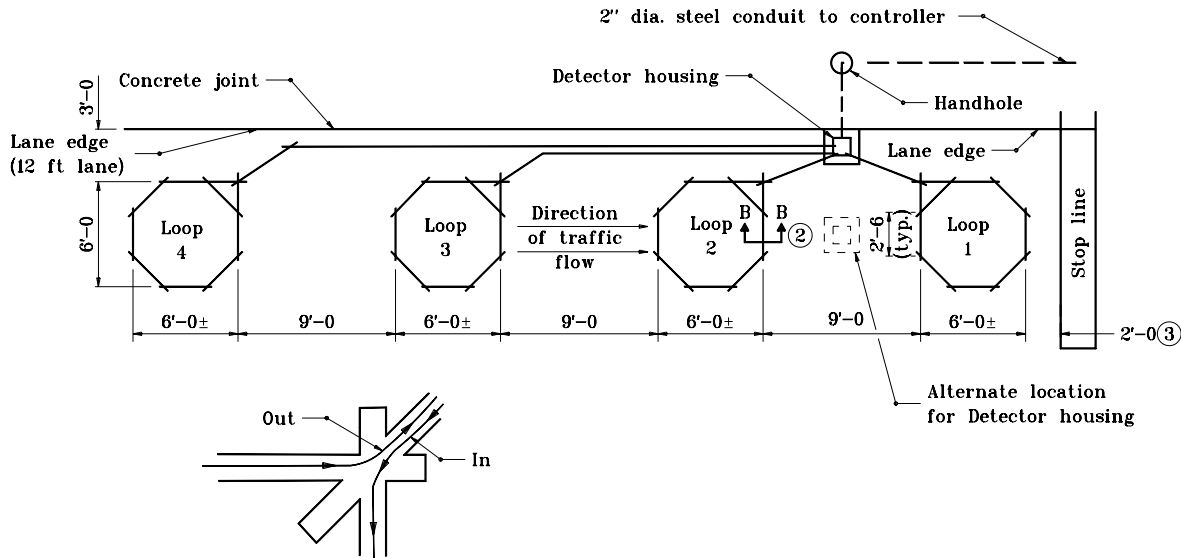
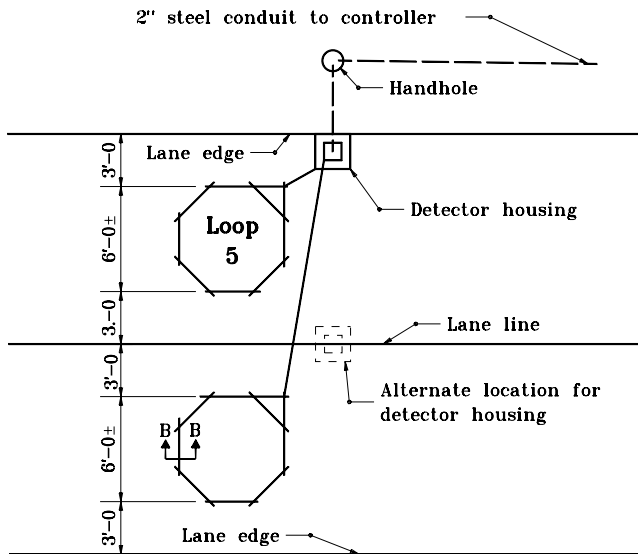


TYPICAL LOOP DETECTION SAW-CUT PLAN (ONE LANE)



TYPICAL LOOP DETECTION (TWO LANES)



GENERAL NOTES

1. Loop saw-cuts as shown on plan sheets are to be considered as schematic only. In the event of discrepancies, this detail shall govern.
- ② See Standard Drawing E 805-SGLI-02 for Section B-B.
- ③ This distance is typical depending on the intersection geometrics; a loop can be sawed in front of the stop line.

INDIANA DEPARTMENT OF TRANSPORTATION	
TRAFFIC SIGNAL LOOP INSTALLATION	
MAY 1998	
STANDARD DRAWING NO. E 805-SGLI-01	
	DETAILS PLACED IN THIS FORMAT 11-15-99 /s/ Anthony L. Uremovich 11-15-99 DESIGN STANDARDS ENGINEER DATE
DESIGN STANDARDS ENGINEER	/s/ Firooz Zandi 11-15-99 CHIEF HIGHWAY ENGINEER DATE ORIGINALLY APPROVED 5-01-98