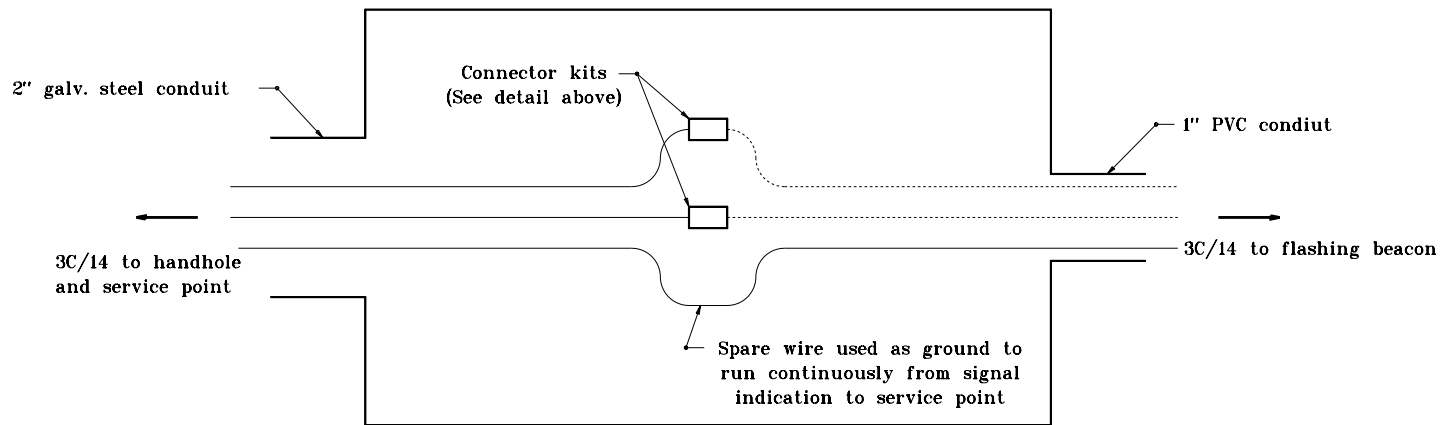
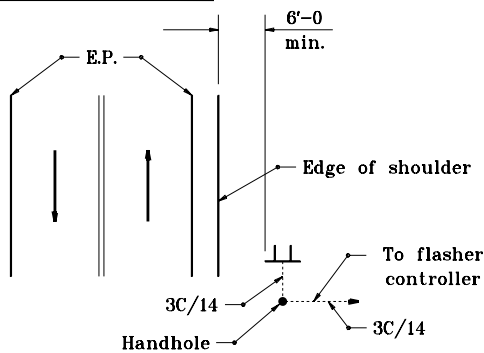


**DISCONNECT CONNECTOR KIT
TO BE USED IN DETECTOR HOUSING**

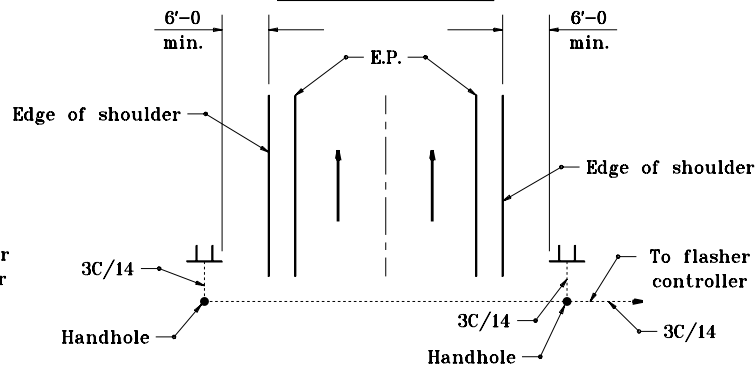


DETECTOR HOUSING CONNECTIONS DETAIL

SINGLE LANE ROADWAY



MULTI-LANE ROADWAY



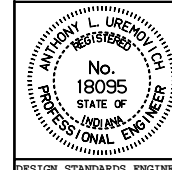
TYPICAL FLASHING BEACON CONFIGURATION

INDIANA DEPARTMENT OF TRANSPORTATION

**FLASHING BEACON WITH
WARNING SIGN DETAILS**

MAY 1998

STANDARD DRAWING NO. **E 805-SGFB-02**



DETAILS PLACED IN THIS FORMAT 11-15-99

/s/ Anthony L. Uremovich 11-15-99
DESIGN STANDARDS ENGINEER DATE

/s/ Firooz Zandi 11-15-99
CHIEF HIGHWAY ENGINEER DATE

DESIGN STANDARDS ENGINEER

ORIGINALLY APPROVED 5-01-98