

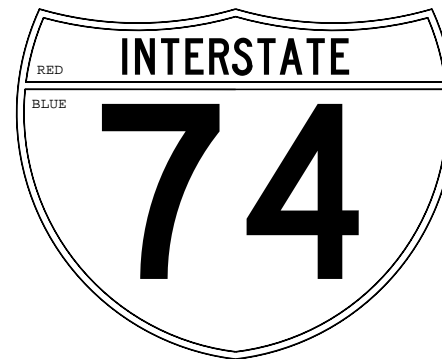


WHITE BACKGROUND WITH BLACK LETTERS, NUMERALS AND BORDER

M1-16 M1-16a
M1-16-A M1-16a-A
M1-16-B M1-16a-B

STATE ROUTE MARKER

M1-16	M1-16a	M1-16-A	M1-16a-A	M1-16-B	M1-16a-B
12" NUMERALS		18" NUMERALS		24" NUMERALS	
2 DIGITS	3 DIGITS	2 DIGITS	3 DIGITS	2 DIGITS	3 DIGITS
24" x 24"	30' x 24"	36" x 36"	45' x 36"	48" x 48"	60" x 48"



WHITE LETTERS, NUMERALS, AND BORDER

M1-1
M1-1-A
M1-1-B

INTERSTATE SHIELD

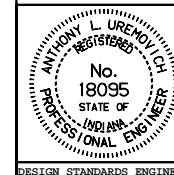
M1-1		M1-1-A		M1-1-B	
12" NUMERALS		18" NUMERALS		24" NUMERALS	
2 DIGITS	3 DIGITS	2 DIGITS	3 DIGITS	2 DIGITS	3 DIGITS
24" x 24"	30' x 24"	36" x 36"	45" x 36"	48" x 48"	60" x 48"

INDIANA DEPARTMENT OF TRANSPORTATION

ROUTE MARKER DETAILS

MARCH 1995

STANDARD DRAWING NO. **E 802-SNGS-02**



DETAILS PLACED IN THIS FORMAT 11-15-99

/s/ Anthony L. Uremovich 11-15-99
DESIGN STANDARDS ENGINEER DATE

/s/ Firooz Zandi 11-15-99
CHIEF HIGHWAY ENGINEER DATE

DESIGN STANDARDS ENGINEER

ORIGINALLY APPROVED 3-01-95