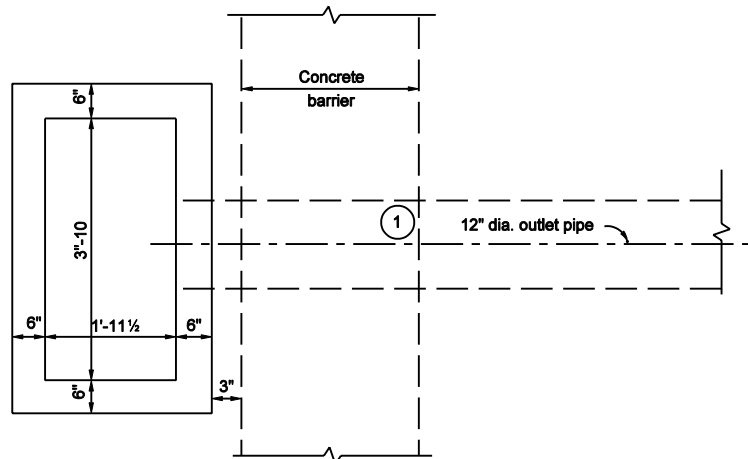


SECTION B-B



SECTION C-C

NOTES :

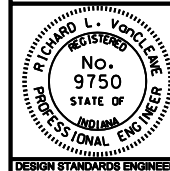
- ① Outlet pipe orientation to meet site conditions.
- ② See Standard Drawing E 720-INST-05D for Type HA inlet with slotted drain pipe placement.
- ③ All barrier delineator assemblies shall be centered on top of concrete barrier at the inlets.
- ④ See Standard Drawing E 720-ICCA-01 to -03 for casting type 5 details.
- ⑤ Concrete shoulder or pavement between type 5 casting and concrete barrier wall.
- ⑥ Concrete, HMA or earth shoulder as appropriate at site.

INDIANA DEPARTMENT OF TRANSPORTATION

**INLET TYPE HA
SECTION B-B**

MARCH 2003

STANDARD DRAWING NO. E 720-INST-05C



/s/ Richard L. VanCleave 3-03-03
DESIGN STANDARDS ENGINEER DATE

/s/ Richard K. Smutzer 3-03-03
CHIEF HIGHWAY ENGINEER DATE

DESIGN STANDARDS ENGINEER