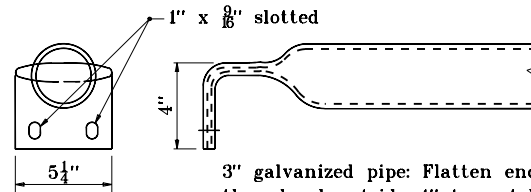


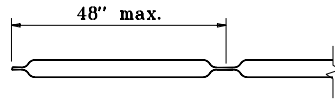
3" galvanized pipe: Flatten end, then bend outside 4" to match end section sides.

OR



3" galvanized pipe: Flatten end, then bend outside 4" to match end section sides.

TRANSVERSE SAFETY BAR DETAILS



LONGITUDINAL SAFETY BAR DETAIL

INDIANA DEPARTMENT OF TRANSPORTATION	
SAFETY METAL CULVERT END SECTIONS FOR SMOOTH PIPE	
JANUARY 1998	
STANDARD DRAWING NO. E 715-SMES-09	
	DETAILS PLACED IN THIS FORMAT 7-27-99 /s/ Anthony L. Uremovich 7-27-99 <small>DESIGN STANDARDS ENGINEER DATE</small>
	/s/ Firooz Zandi 7-27-99 <small>CHIEF HIGHWAY ENGINEER DATE</small>
	<small>DESIGN STANDARDS ENGINEER ORIGINALLY APPROVED 1-02-98</small>