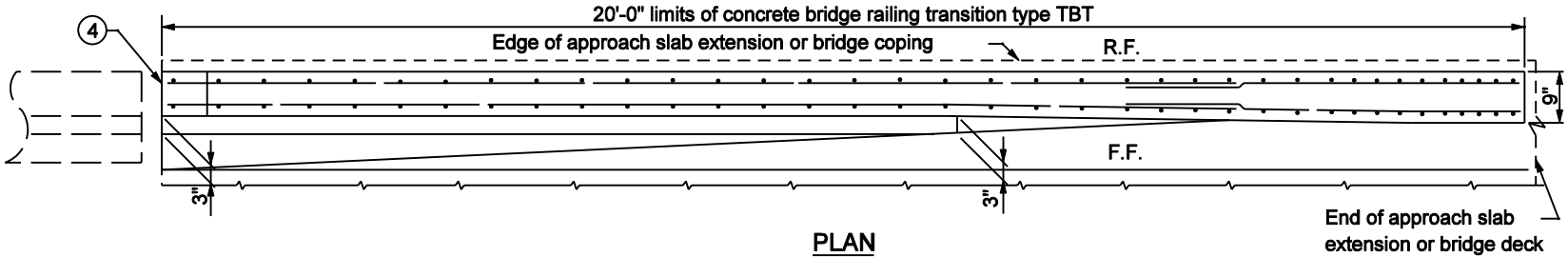


**NOTES:**

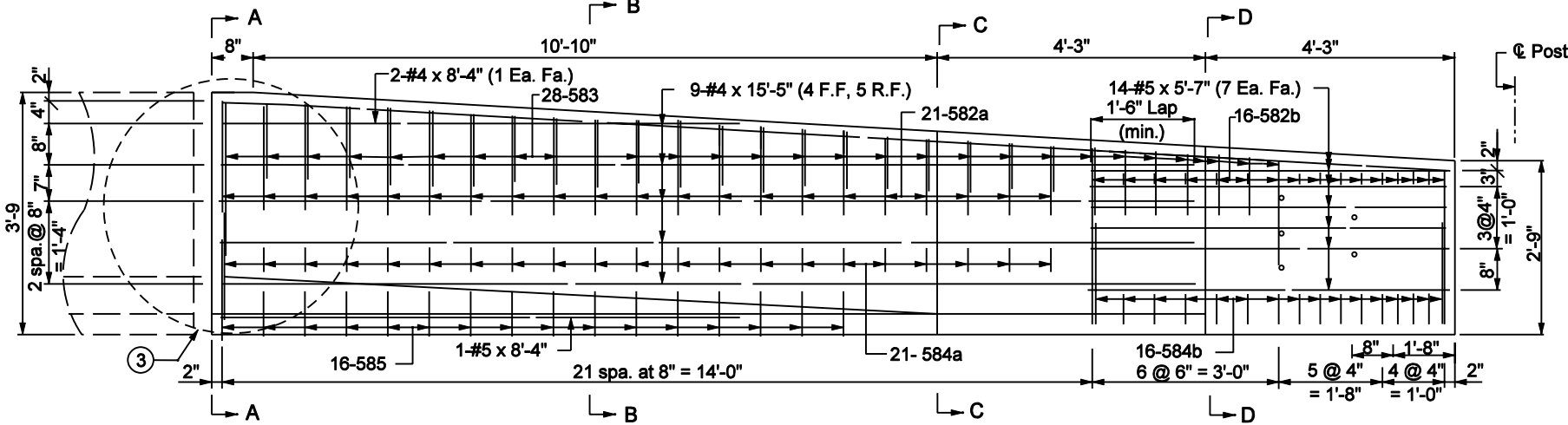
- 1. See Standard Drawing E 706-TTBT-02 for sections.
- 2. See Standard Drawing E 706-TASE-05 for General Notes.

**LEGEND:**

F.F. = Front Face  
R.F. = Rear Face



**PLAN**



**ELEVATION**

45" TRUCK HEIGHT THRIE BEAM /  
CONCRETE BRIDGE RAILING TRANSITION

INDIANA DEPARTMENT OF TRANSPORTATION	
<b>CONCRETE BRIDGE RAILING TRANSITION TYPE TBT</b>	
MARCH 2003	
STANDARD DRAWING NO. E 706-TTBT-01	
	/s/ Richard L. VanCleave 3-03-03 DESIGN STANDARDS ENGINEER DATE
	/s/ Richard K. Smutzer 3-03-03 CHIEF HIGHWAY ENGINEER DATE