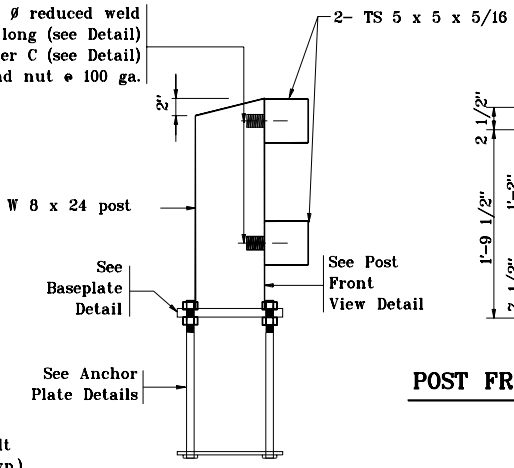
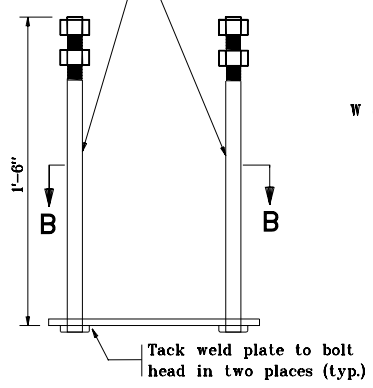


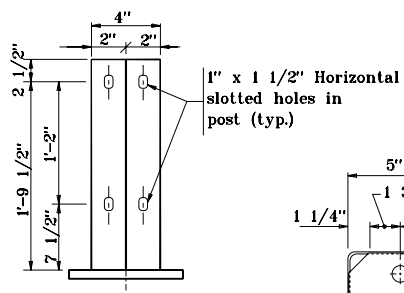
4-15/16"  $\phi$  anchor bolts threaded 5" min. with 2 nuts and flat washers

2 - Threaded 3/4"  $\phi$  reduced weld base stud x 2" long (see Detail) w/1- $\mathbb{L}$  washer C (see Detail)

1 lock washer and nut  $\phi$  100 ga.



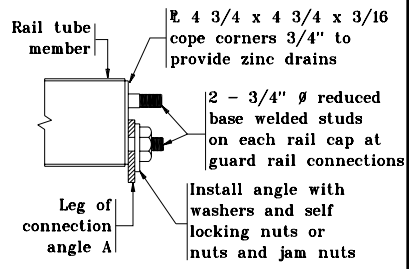
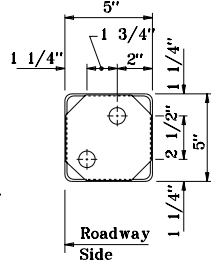
**SECTION A - A**



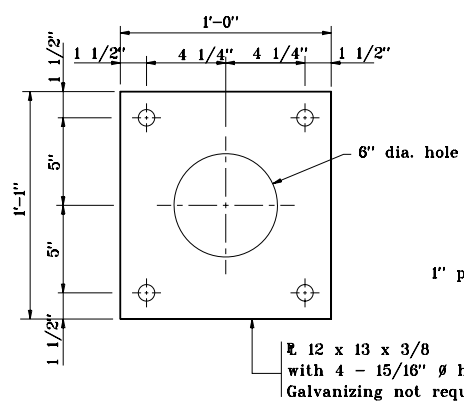
**POST FRONT VIEW DETAIL**

**NOTES :**

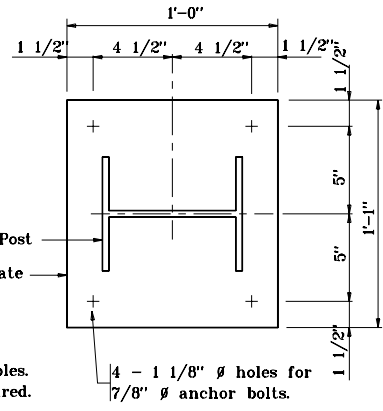
1 Gap of 1" unless noted otherwise on plans. Railing splice required in panel with a deck expansion joint.



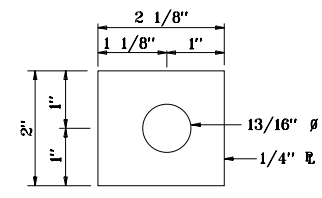
**RAIL CAP DETAIL**



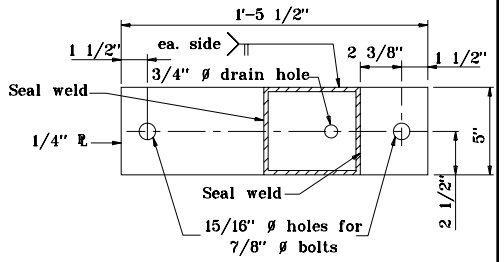
**SECTION B - B ANCHOR PLATE DETAILS**



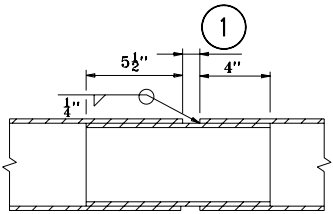
**BASE PLATE DETAILS**



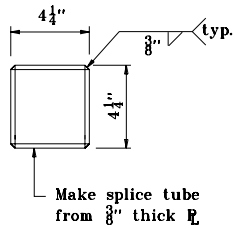
**PLATE WASHER C DETAIL**



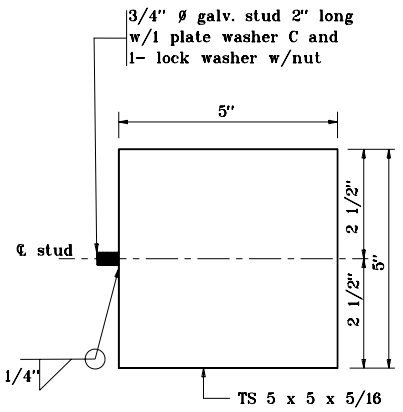
**TOP RAIL END VIEW B - B**



**RAILING SPLICE DETAILS**



Make splice tube from 3/8" thick E



**BASE WELD STUD DETAIL**

INDIANA DEPARTMENT OF TRANSPORTATION	
RAILING, CF-1	
SEPTEMBER 2001	
STANDARD DRAWING NO.E 706-BRTM-02	
	/s/ Anthony L. Uremovich 9-04-01 DESIGN STANDARDS ENGINEER DATE
	/s/ Firooz Zandi 9-04-01 CHIEF HIGHWAY ENGINEER DATE
DESIGN STANDARDS ENGINEER	