

REINFORCEMENT BAR NOTES:

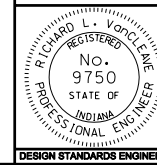
1. See Standard Drawing E703-BRST-01 for bending details and reinforcing bar notes.
- 2 Reinforcing steel 492 bar at 18" maximum spacing (typical).
- 3 WITHIN 10'-0" ON BOTH SIDES OF AN OPEN JOINT IN THE BARRIER AND AT THE END OF THE BRIDGE, REDUCE SPACING OF REINFORCEMENT TO 492 @ 12" MAX.
- 4 See Standard Drawing E 706-BRTF-05 for concrete bridge railing detail.
- 5 All reinforcing steel to be epoxy coated.

INDIANA DEPARTMENT OF TRANSPORTATION

CONCRETE BRIDGE RAILING TYPE TF-2

SEPTEMBER 2005

STANDARD DRAWING NO. E 706-BRTF-02



/s/ Richard L. VanCleave 9-01-05
DESIGN STANDARDS ENGINEER DATE

/s/ Richard K. Smutzer 9-01-05
CHIEF HIGHWAY ENGINEER DATE

DESIGN STANDARDS ENGINEER