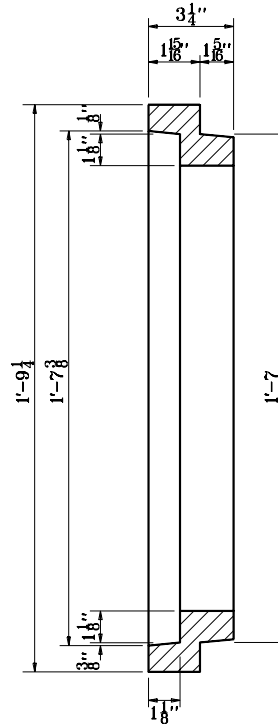
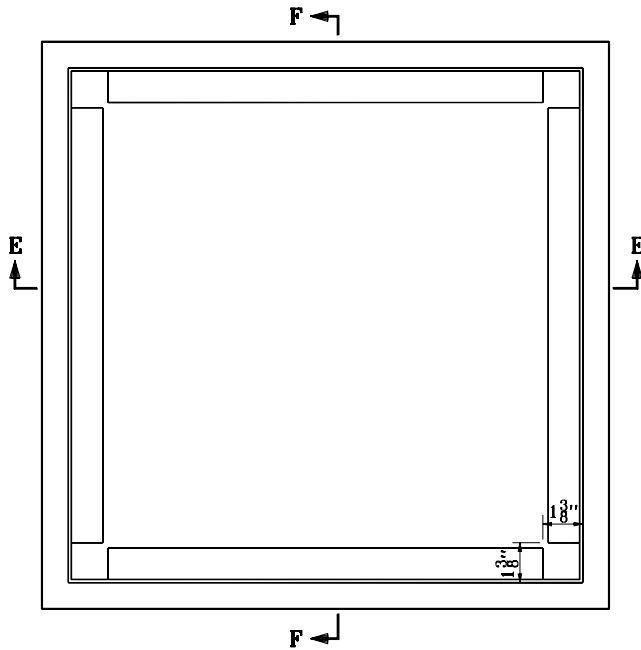
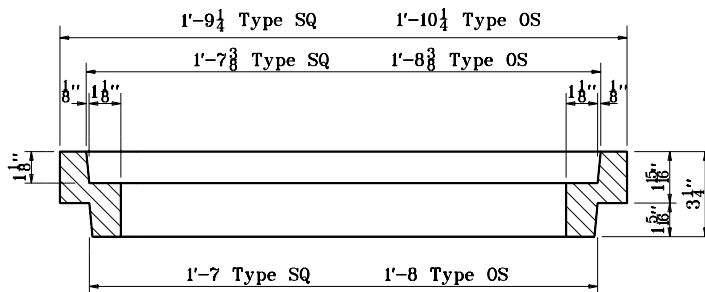


GENERAL NOTES

1. 4 - $\frac{5}{16}$ " ϕ x $3\frac{3}{4}$ " ctsk. head stainless steel screws required for each frame.
2. The Type SQ frame weighs approximately 87 lb. The Type OS frame weighs approximately 89 lb.

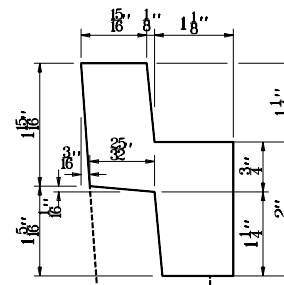


SECTION F-F



SECTION E-E

ADJUSTING FRAME TYPE SQ AND OS



RING DETAILS

Existing casting

INDIANA DEPARTMENT OF TRANSPORTATION	
ADJUSTING FRAME DETAILS TYPE SQ AND OS SEPTEMBER 1994	
STANDARD DRAWING NO. E 704-BDAF-01	
DETAILS PLACED IN THIS FORMAT 11-15-99	
	/s/ Anthony L. Uremovich 11-15-99 DESIGN STANDARDS ENGINEER DATE
	/s/ Firooz Zandi 11-15-99 CHIEF HIGHWAY ENGINEER DATE
DESIGN STANDARDS ENGINEER	ORIGINALLY APPROVED 9-01-94