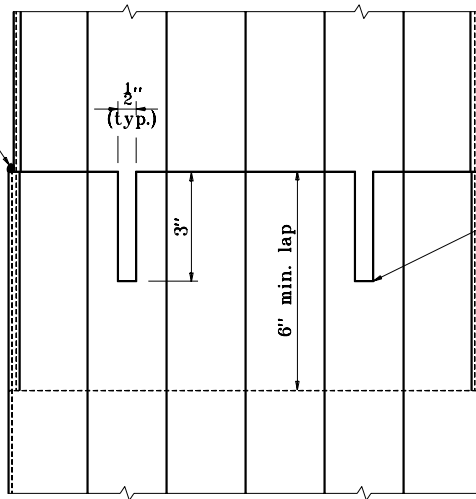
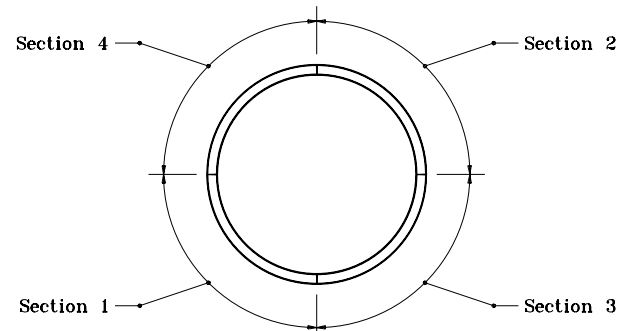


Continuous weld



**FOR FLUTED SHELLS**

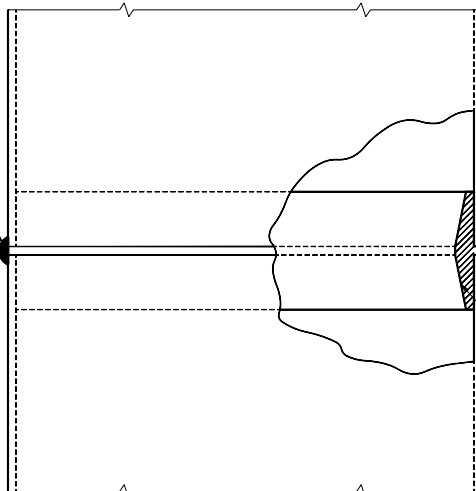
Burn four equally spaced slots in lower section before inserting extension



Completion of Sections 1, 2, 3 & 4 constitutes one pass.

**WELDING SEQUENCE**

Continuous weld



**FOR ROUNDED PIPE**

Continuous weld

Electric type wedge split chill ring for line welding

INDIANA DEPARTMENT OF TRANSPORTATION	
<b>SPLICING PILE SHELLS IN FIELD</b>	
SEPTEMBER 1994	
<b>STANDARD DRAWING NO. E 701-BPIL-04</b>	
DETAILS PLACED IN THIS FORMAT 11-15-99	
	/s/ Anthony L. Uremovich 11-15-99 DESIGN STANDARDS ENGINEER DATE
	/s/ Firooz Zandi 11-15-99 CHIEF HIGHWAY ENGINEER DATE
DESIGN STANDARDS ENGINEER	ORIGINALLY APPROVED 9-30-94