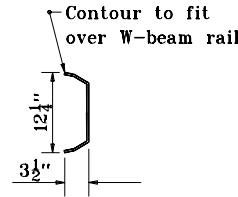
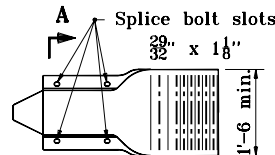


TOP VIEW

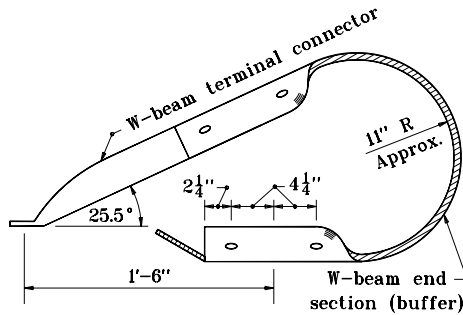
W-BEAM END SECTION (BUFFER)



SECTION A-A

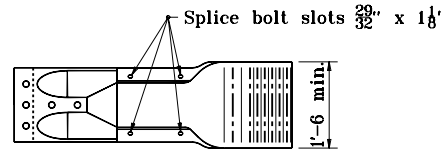


A SIDE VIEW

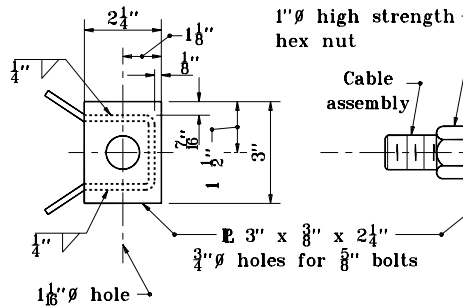


TOP VIEW

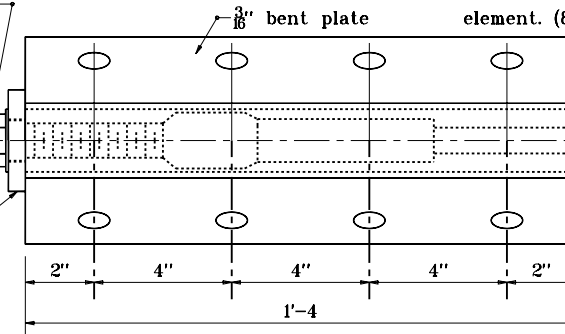
TERMINAL END BUFFER



SIDE VIEW

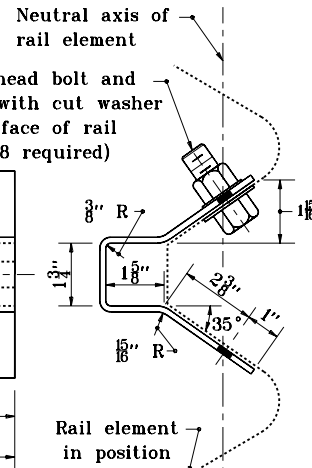


LEFT END VIEW



ANCHOR PLATE

M10 hex head bolt and hex nut with cut washer on front face of rail element. (8 required)



RIGHT END VIEW

GENERAL NOTES

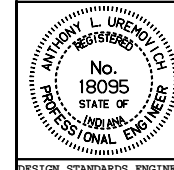
1. This sheet shall be used in conjunction with Standard Drawings E 601-CWGS-01, 02, 03, and 06.
2. An alternate single piece having a similar dimensional shape to the terminal end buffer and mating with the W-beam guardrail may be used.
3. The W-beam terminal connector shall be steel of 0.138 inch thickness (10 gauge).
4. If the W-beam terminal connector is lapped on the outside of the guardrail, a galvanized 1" I.D. 2" O.D., 0.134" thick, narrow plain washer shall be placed under the splice bolt heads.
5. Attach the W-beam to the steel pipe with a 3/8" diameter x 1 1/4" length button head bolt with no washer. No connection to the post is required.
6. Nuts for the anchor cable assembly shall be hand tightened, plus one complete turn at the anchor plate end. All other nuts shall be torqued to 50 ft.-lbs.

INDIANA DEPARTMENT OF TRANSPORTATION

**CURVED W-BEAM
GUARDRAIL SYSTEM**

APRIL 1996

STANDARD DRAWING NO. E 601-CWGS-05



DETAILS PLACED IN THIS FORMAT 11-15-99

/s/ Anthony L. Uremovich 11-15-99
DESIGN STANDARDS ENGINEER DATE

/s/ Firooz Zandi 11-15-99
CHIEF HIGHWAY ENGINEER DATE

DESIGN STANDARDS ENGINEER

ORIGINALLY APPROVED 4-01-96