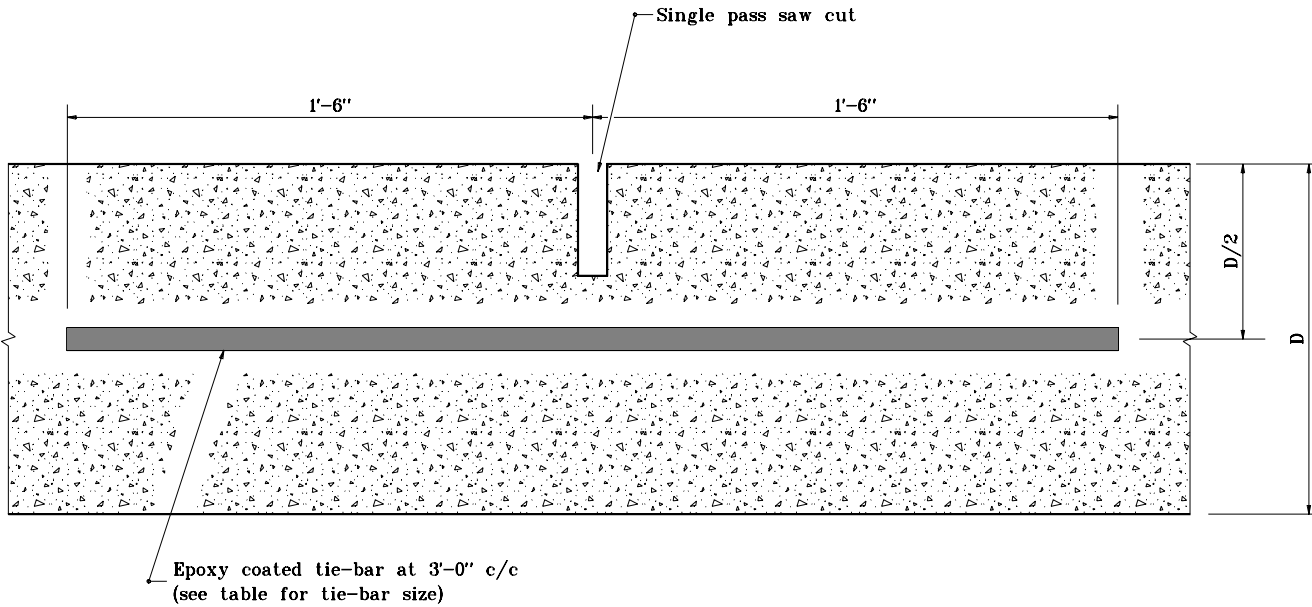


TIE-BAR SIZES FOR LONGITUDINAL JOINT	
Pavement Thickness, D	Tie Bar Size
Less than 9"	#5
9" through 12"	#6
Greater than 12"	#7



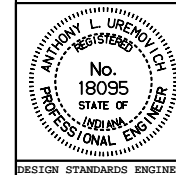
**TRANSVERSE SECTION THROUGH CONCRETE PCCP**

INDIANA DEPARTMENT OF TRANSPORTATION

**LONGITUDINAL JOINT**

SEPTEMBER 1999

STANDARD DRAWING NO. **E 503-CCPJ-02**



/s/ Anthony L. Urenovich 9-01-99  
DESIGN STANDARDS ENGINEER DATE

/s/ Donald W. Lucas 9-01-99  
CHIEF HIGHWAY ENGINEER DATE

DESIGN STANDARDS ENGINEER