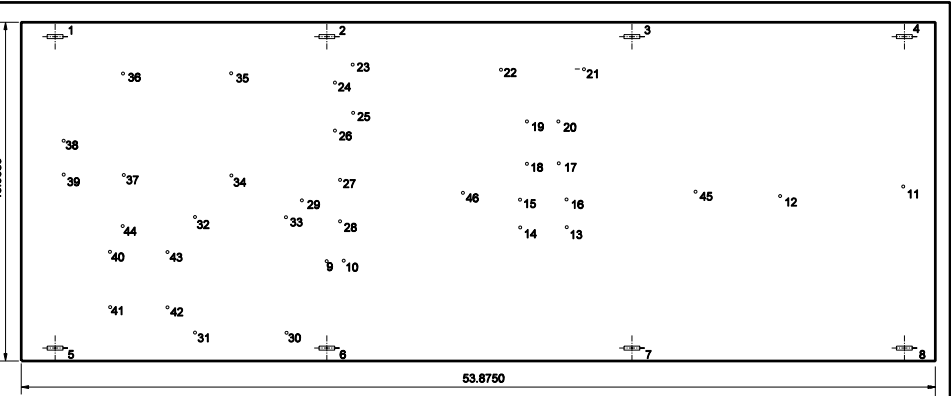


DETECTOR CARD DIN RAIL DETAIL

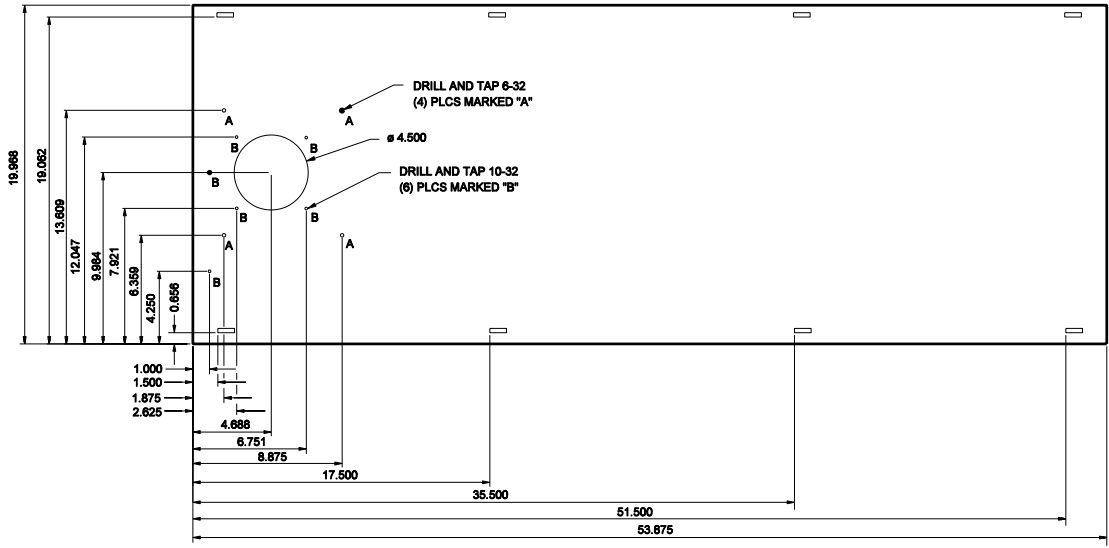


POWER DISTRIBUTION PANEL PUNCH OUT DETAIL

X
Y
COORDINATES

| No | X | Y | SIZE |
|----|--------|--------|------------------|
| 1 | 2.000 | 19.187 | 0.25 x 1.00 SLOT |
| 2 | 18.000 | | |
| 3 | 36.000 | | |
| 4 | 52.000 | 19.187 | |
| 5 | 2.000 | 0.781 | |
| 6 | 18.000 | | |
| 7 | 36.000 | | |
| 8 | 52.000 | 0.781 | 0.25 x 1.00 SLOT |
| 9 | 18.000 | 6.000 | 0.125 DIA |
| 10 | 18.000 | 6.000 | 0.125 DIA |
| 11 | 52.000 | 10.234 | 8-32 NC-2 |
| 12 | 44.888 | 9.734 | |
| 13 | 32.180 | 7.950 | |
| 14 | 29.430 | 7.950 | |
| 15 | 29.430 | 9.800 | |
| 16 | 32.180 | 9.800 | |
| 17 | 31.740 | 11.708 | |
| 18 | 29.870 | 11.708 | |
| 19 | 29.870 | 14.175 | |
| 20 | 31.740 | 14.175 | |
| 21 | 33.250 | 17.234 | |
| 22 | 28.375 | 17.234 | 8-32 NC-2 |

| No | X | Y | SIZE |
|----|--------|--------|------------|
| 23 | 19.585 | 17.540 | 10-32 NC-2 |
| 24 | 18.522 | 16.478 | |
| 25 | 19.585 | 14.728 | |
| 26 | 18.522 | 13.865 | |
| 27 | 18.803 | 10.736 | |
| 28 | 18.803 | 8.336 | |
| 29 | 16.553 | 9.536 | |
| 30 | 15.608 | 1.750 | |
| 31 | 10.250 | 1.750 | |
| 32 | 10.250 | 8.550 | |
| 33 | 15.608 | 8.550 | |
| 34 | 12.428 | 11.000 | |
| 35 | 12.428 | 17.000 | |
| 36 | 6.053 | 17.000 | |
| 37 | 6.053 | 11.000 | |
| 38 | 2.500 | 13.000 | |
| 39 | 2.500 | 11.000 | |
| 40 | 5.250 | 6.500 | |
| 41 | 5.250 | 3.250 | |
| 42 | 8.625 | 3.250 | |
| 43 | 8.625 | 6.500 | |
| 44 | 6.000 | 8.000 | 10-32 NC-2 |
| 45 | 39.750 | 10.000 | 8-32 NC-2 |
| 46 | 28.000 | 10.000 | 8-32 NC-2 |



HEATER PANEL PUNCH OUT DETAILS

NOTES:

- See Standard Drawings E 809-ITCS-01 thru -02 or -03 thru -07 for additional ITS cabinet details.

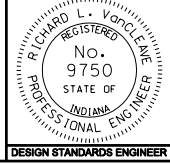
All dimensions are in inches

INDIANA DEPARTMENT OF TRANSPORTATION

CABINET PUNCH OUT DETAILS

MARCH 2006

STANDARD DRAWING NO. E 809-ITSC-03



/s/ Richard L. VanCleave 3-01-06
DESIGN STANDARDS ENGINEER DATE

/s/ Richard K. Smutzer 3-01-06
CHIEF HIGHWAY ENGINEER DATE

DESIGN STANDARDS ENGINEER