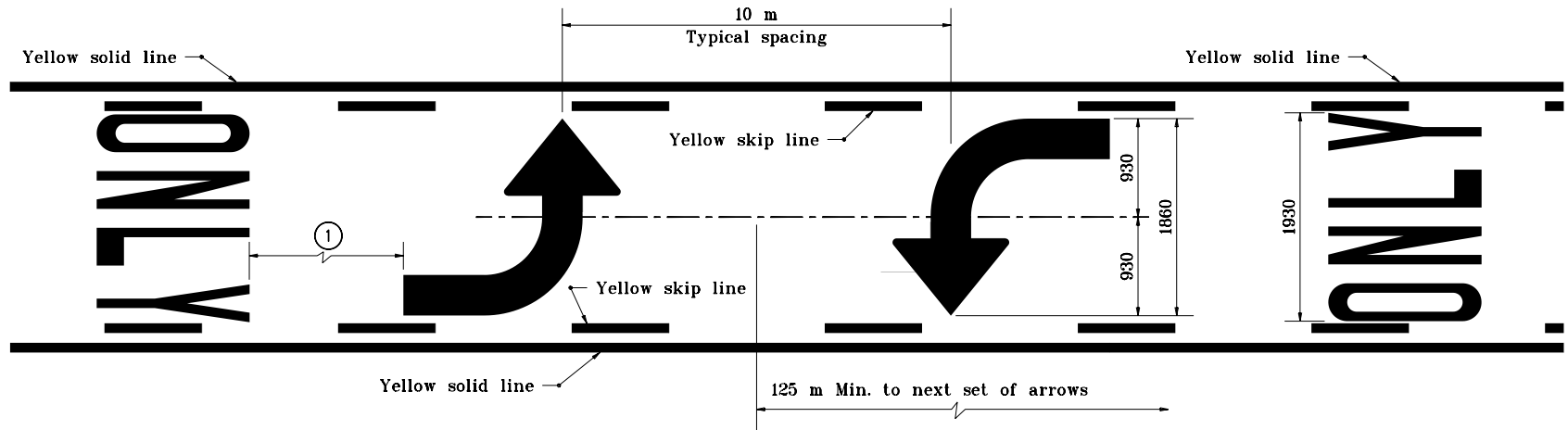


GENERAL NOTES

- ① This dimension shall be at least 4 times the height of the characters of ONLY for posted speed \leq 45 mph but not more than 10 times the height of the characters of ONLY for posted speed $>$ 45 mph.



**PAVEMENT MARKING FOR BI-DIRECTIONAL LEFT TURN LANE
(WORD AND SYMBOL MARKINGS)**

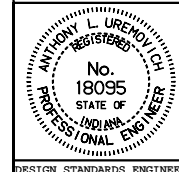
All dimensions are in mm unless otherwise specified.

INDIANA DEPARTMENT OF TRANSPORTATION

PAVEMENT MARKING DETAILS

JANUARY 2000

STANDARD DRAWING NO. 808-MKPM-06



/s/ Anthony L. Uremovich 1-03-00
DESIGN STANDARDS ENGINEER DATE

/s/ Firooz Zandi 1-03-00
CHIEF HIGHWAY ENGINEER DATE

DESIGN STANDARDS ENGINEER