

ALTERNATIVE
 32 x 115 square plate tapped
 & welded to anchor bolt

SECTION A-A

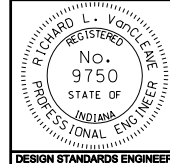
All Dimension are in mm unless otherwise specified

INDIANA DEPARTMENT OF TRANSPORTATION

**ANCHOR BOLT DETAIL FOR
 SIGNAL STEEL STRAIN POLES**

MARCH 2004

STANDARD DRAWING NO. 805-SGSP-05



/s/ Richard L. VanCleave 3/01/04
 DESIGN STANDARDS ENGINEER DATE

/s/ Richard K. Smutzer 3/01/04
 CHIEF HIGHWAY ENGINEER DATE

DESIGN STANDARDS ENGINEER