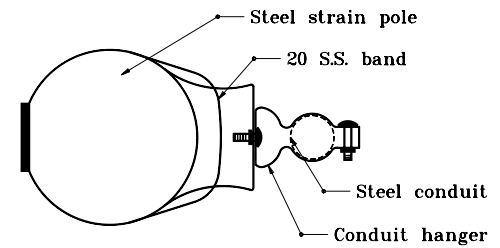


GENERAL NOTES

- ① This distance shall be from 3.0 m to 4.6 m above centerline of pavement for vehicular signals and from 2.1 m to 3.0 m above top of sidewalk for pedestrian signals.
- ② Each pedestrian signal and each vehicular signal requires 2 pole plates and 2 pipe arms.

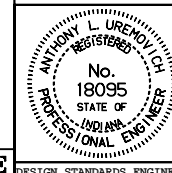


DETAIL A

All dimensions are in mm unless otherwise specified.

INDIANA DEPARTMENT OF TRANSPORTATION
**SIGNAL INDICATION MOUNTED
 ON STEEL OR WOOD POLES**
 SEPTEMBER 1998

STANDARD DRAWING NO. 805-SGCO-04



/s/ Anthony L. Uremovich 9-01-98
 DESIGN STANDARDS ENGINEER DATE

/s/ Donald W. Lucas 9-01-98
 CHIEF HIGHWAY ENGINEER DATE

Source Sheet: NONE