

**GENERAL NOTES**

1. Signs R11-2, R11-3, R11-4, R5-1-A and R5-1-B shall be encapsulated lens reflective sheeting background.
2. See Standard Drawing 801-TCSN-11 for additional general notes.
- ③ A 0.7 m X 0.25 m metal plate, covered with federal orange reflective material with black numerals designating predetermined distance, may be attached over the word "AHEAD" to more specifically locate the subject hazard.



R11-4



R5-1-A  
R5-1-B

①



R11-3



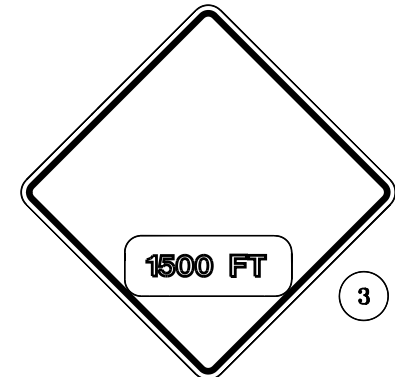
R11-2



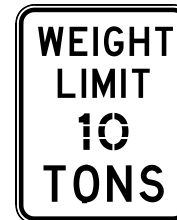
XG20-1



XG20-4

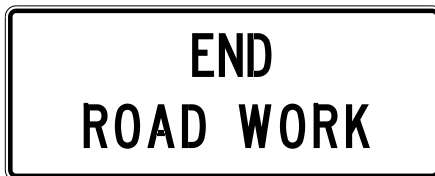


③



R12-1  
R12-1-A

①



XG20-2a



XG20-2

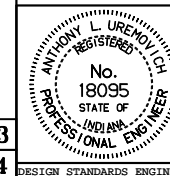
All dimensions are in mm unless otherwise specified.

INDIANA DEPARTMENT OF TRANSPORTATION

TRAFFIC CONTROL  
SIGNS

SEPTEMBER 1997

STANDARD DRAWING NO. 801-TCSN-04



/s/ Anthony L. Uremovich 9-01-97  
DESIGN STANDARDS ENGINEER DATE

/s/ Donald W. Lucas 9-01-97  
CHIEF HIGHWAY ENGINEER DATE

Source Sheet: Det 3  
Source Sheet: Det 4