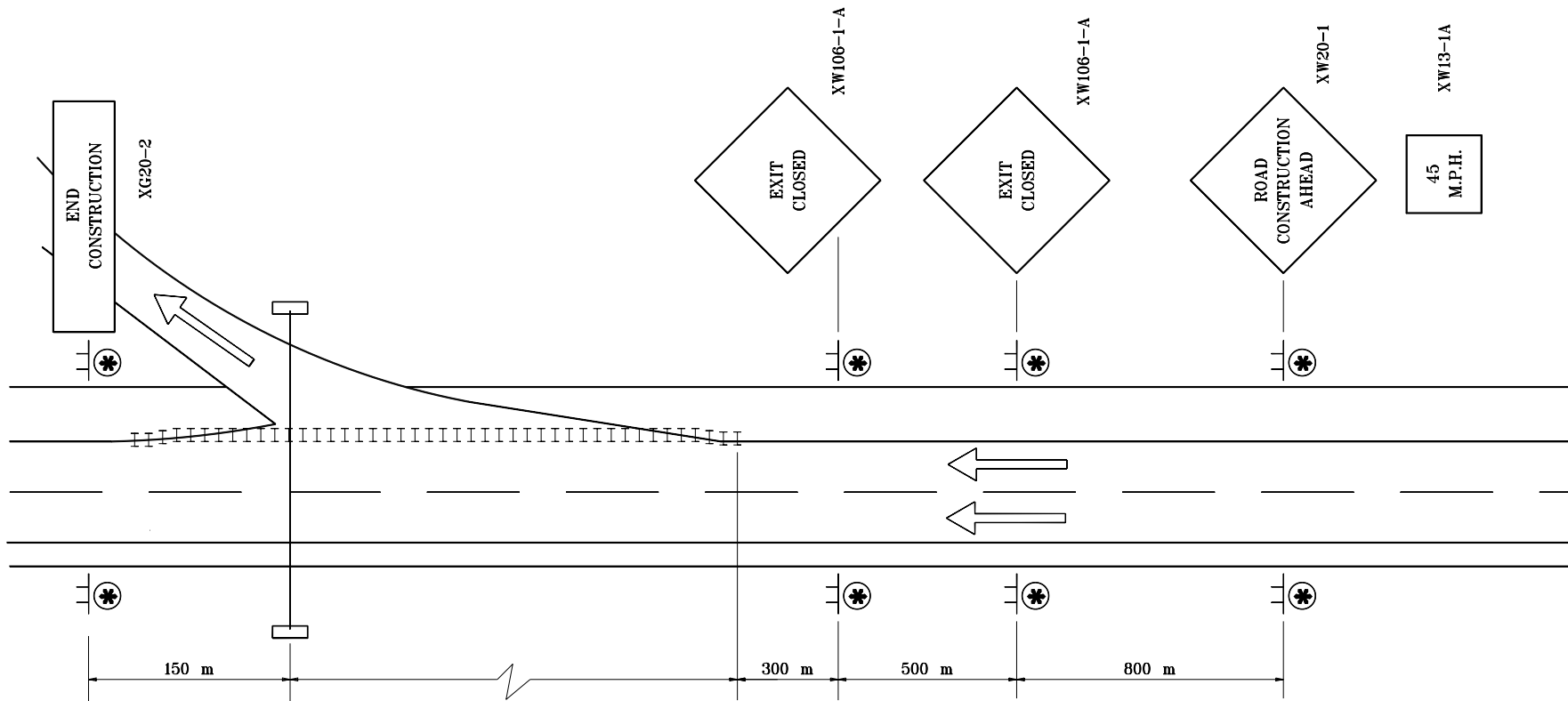


GENERAL NOTES

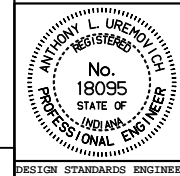
1. See Standard Drawing 801-TCLG-01 for Legend and General Notes.



**MULTI-LANE DIVIDED HIGHWAY,
LONG-TERM CLOSURE**

All dimensions are in mm unless otherwise specified.

INDIANA DEPARTMENT OF TRANSPORTATION
**TRAFFIC CONTROL FOR
OVERHEAD SIGN INSTALLATION**
 JUNE 1995
 STANDARD DRAWING NO. **801-TCLC-14**



/s/ Anthony L. Uremovich 7-03-95
 DESIGN STANDARDS ENGINEER DATE

/s/ Donald W. Lucas 7-03-95
 CHIEF HIGHWAY ENGINEER DATE

Source Sheet: MT9J