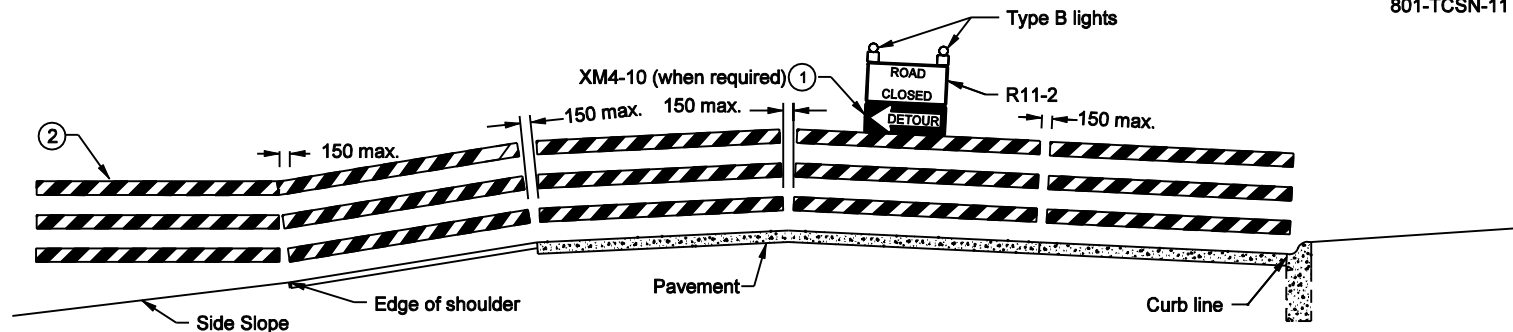


(HALF PLAN WITH SHOULDER SECTION)

(HALF PLAN WITH CURB SECTION)

PLAN VIEW



(HALF ELEVATION WITH SHOULDER SECTION)

(HALF ELEVATION WITH CURB SECTION)

ELEVATION

**TYPICAL APPLICATIONS OF TYPE III BARRICADES
ROAD CLOSED TO ALL TRAFFIC**

GENERAL NOTES

- ① The Detour Arrow sign shall be used only when a detour route has been signed.
- ② Barricades shall be supported on driven posts in areas outside of the pavement or sidewalk, where side slopes are 3 to 1 or flatter.
3. See standard drawing 801-TCDV-04 for sign use and mounting information.
4. Barricades and supports shall meet NCHRP 350 crash evaluation criteria.
4. See Note 5 on Standard Drawing 801-TCSN-11 for post depth.

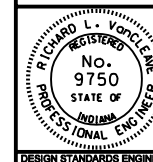
All Dimension are in mm unless otherwise specified

INDIANA DEPARTMENT OF TRANSPORTATION

**TYPE III BARRICADE
TYPICAL APPLICATIONS**

SEPTEMBER 2002

STANDARD DRAWING NO. 801-TCDV-07



/s/ Richard L. VanCleave 9-03-02
DESIGN STANDARDS ENGINEER DATE

/s/ Richard K. Smutzer 9-03-02
CHIEF HIGHWAY ENGINEER DATE

DESIGN STANDARDS ENGINEER