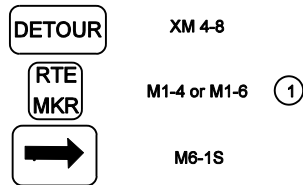
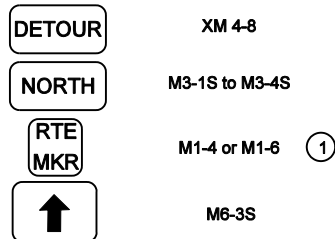


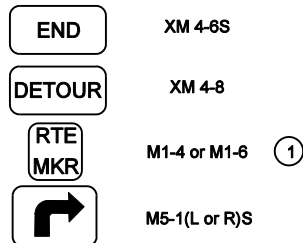
(A) ADVANCE TURN DETOUR
ROUTE MARKER ASSEMBLY



(B) DIRECTIONAL DETOUR ROUTE
MARKER ASSEMBLY



(C) CONFIRMING DETOUR ROUTE
MARKER ASSEMBLY



(D) END DETOUR ROUTE
MARKER ASSEMBLY

GENERAL NOTES

- ① For an un-numbered route, a street name sign or county road name or number sign shall be used in lieu of the route marker in detour route marker assembly.
- (A) Advance turn detour route marker assemblies shall be located as shown, or after the last cross street prior to the beginning of the detour, as directed.
- (B) Directional detour route marker assemblies shall be located 30 m to 60 m in advance of all required turns within the detour limits.
- (C) Confirming detour route marker assemblies shall be located 60 m past all major intersections, as directed, and shall be spaced a maximum of 5 km on a rural detour or 800 m on an urban detour on each leg of such detours. Confirming detour route marker assemblies shall be placed after a required turn when directed.
- (D) End detour route marker assemblies shall be located at the point at which traffic is returned to the original route. The advance turn marker (M5-1) shall be included in the assembly when traffic is required to turn to access the original route.

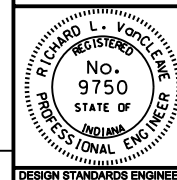
All Dimension are in mm unless otherwise specified

INDIANA DEPARTMENT OF TRANSPORTATION

DETOUR ROUTE
MARKER ASSEMBLIES

MARCH 2003

STANDARD DRAWING NO. 801-TCDDT-03



/s/ Richard L. VanCleave 3-03-03
DESIGN STANDARDS ENGINEER DATE

/s/ Richard K. Smutzer 3-03-03
CHIEF HIGHWAY ENGINEER DATE