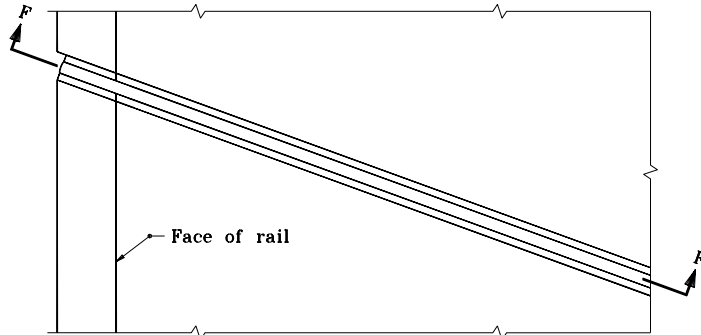
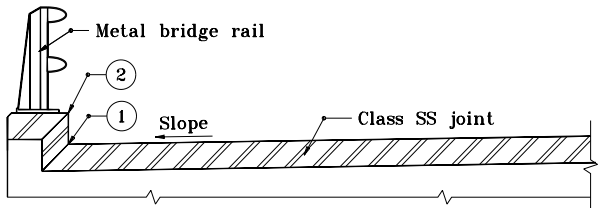


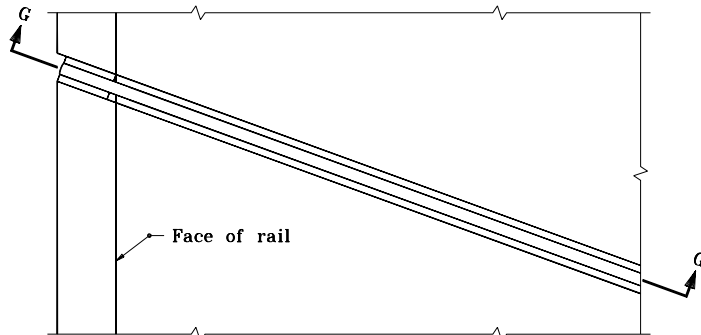
**SECTION F-F**



**PLAN**



**SECTION G-G**



**PLAN**

**METAL RAILING WITHOUT SIDEWALK**

- ① The extrusion and plate assemblies with anchors shall be miter cut and shop spliced at this location. A miter cut, vulcanized shop splice will be required in the strip seal at the location.
- ② The extrusion and plate assemblies with anchors shall be shop prepared for field welding at this location. A miter cut, vulcanized shop splice will be required in the strip seal at this location.

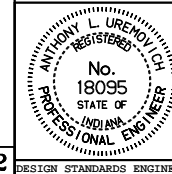
All dimensions are in mm unless otherwise specified.

INDIANA DEPARTMENT OF TRANSPORTATION

**EXPANSION JOINTS CLASS SS**

SEPTEMBER 1994

STANDARD DRAWING NO. **724-BSSJ-07**



/s/ Anthony L. Uremovich 9/30/94  
DESIGN STANDARDS ENGINEER DATE

/s/ Donald W. Lucas 9/30/94  
CHIEF HIGHWAY ENGINEER DATE

Source Sheet: **SS-2**

DESIGN STANDARDS ENGINEER