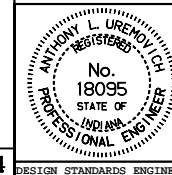


All dimensions are in mm unless otherwise specified.

INDIANA DEPARTMENT OF TRANSPORTATION

**MANHOLE CASTING**  
**TYPE 4 RING AND COVER**  
 SEPTEMBER 1998

STANDARD DRAWING NO. 720-MHCA-02



/s/ Anthony L. Uremovich 9-01-98  
 DESIGN STANDARDS ENGINEER DATE

/s/ Donald W. Lucas 9-01-98  
 CHIEF HIGHWAY ENGINEER DATE

Source Sheet: MC4

DESIGN STANDARDS ENGINEER