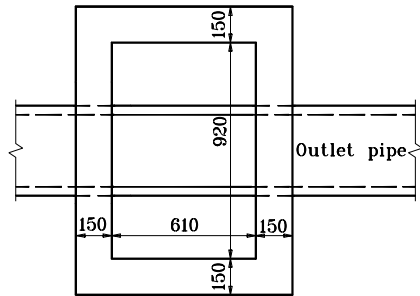


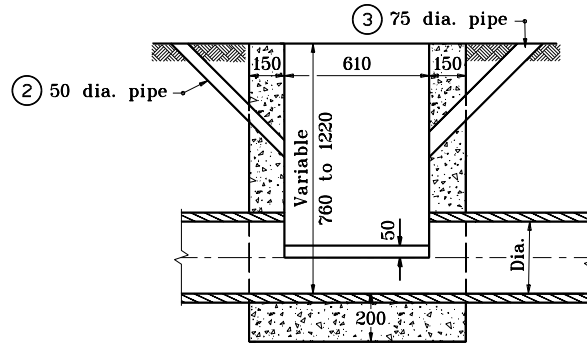
**GENERAL NOTES**

- ① If inlet pipe is required,  $A_1$  and  $B_1$  shall be increased or decreased 300 as directed.
- ② 50 dia. pipe drain from bottom of curb to inlet. Aggregate to be placed around inlet end of pipe.
- ③ 75 min. dia. pipe to be kept open for drainage of subgrade or base until surface is placed.

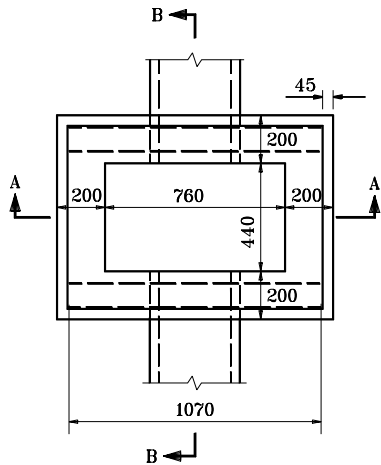


**PLAN**

**INLET TYPE M (CONC.)**

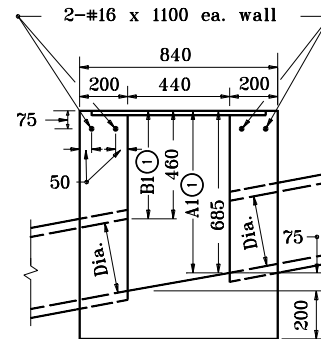
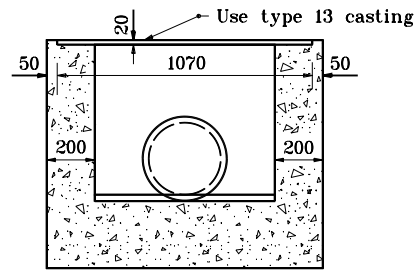


**SECTION**



**SECTION A-A**

**INLET TYPE R (CONC.)**



**SECTION B-B**

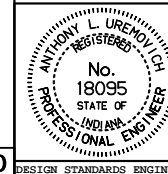
All dimensions are in mm unless otherwise specified.

INDIANA DEPARTMENT OF TRANSPORTATION

**INLETS TYPE M AND R**

SEPTEMBER 1997

STANDARD DRAWING NO. **720-INST-07**



/s/ Anthony L. Uremovich 9-01-97  
DESIGN STANDARDS ENGINEER DATE

/s/ Donald W. Lucas 9-01-97  
CHIEF HIGHWAY ENGINEER DATE

Source Sheet: **MD**