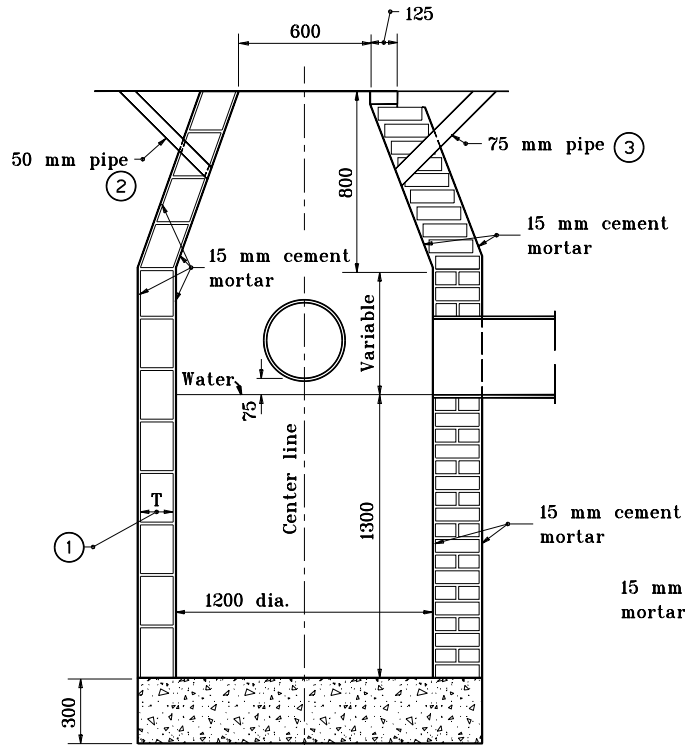
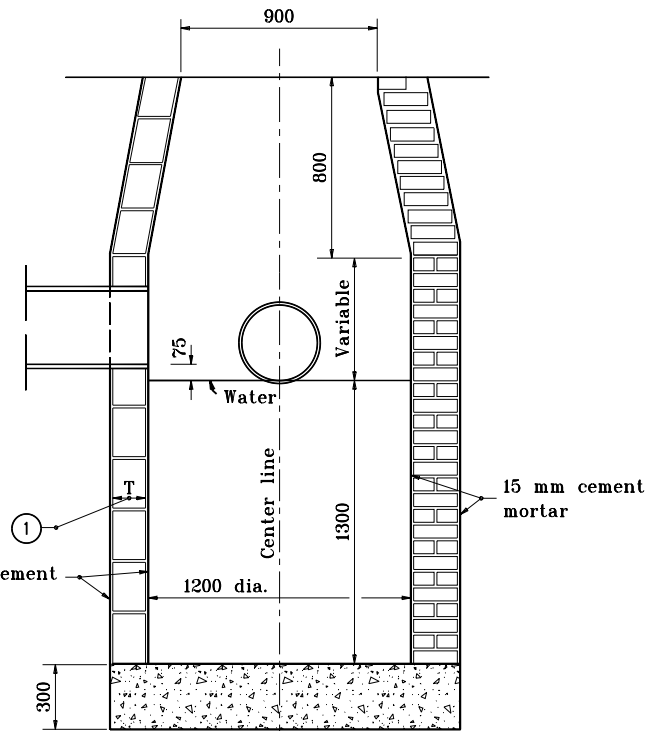


GENERAL NOTES

- ① T = 200 for brick structure
T = 150 for segmental block structure
- ② 50 mm pipe drain from bottom of curb to inlet. Aggregate to be placed around inlet end of pipe.
- ③ 75 mm min. dia. pipe to be kept open for drainage of subgrade or base until surface is placed.



SECTION A-A



SECTION B-B

Source Sheet: MD1

All dimensions are in mm unless otherwise specified.

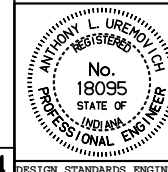
INDIANA DEPARTMENT OF TRANSPORTATION

CATCH BASIN

TYPE J

APRIL 1995

STANDARD DRAWING NO. 720-CBST-04



/s/ Anthony L. Uremovich 4-03-95
DESIGN STANDARDS ENGINEER DATE

/s/ Donald W. Lucas 4-03-95
CHIEF HIGHWAY ENGINEER DATE