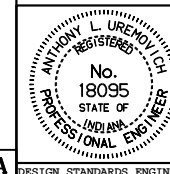


STEEL STRUCTURAL PLATE PIPE ARCH											
SPAN	RISE	H	R	S	SINGLE PIPE		DOUBLE PIPE		TRIPLE PIPE		
					G	m <sup>3</sup> CONC., 2 ANCHORS	G	m <sup>3</sup> CONC., 2 ANCHORS	G	m <sup>3</sup> CONC., 2 ANCHORS	
1850	1400	1180	1130	2880	2250	2.3	5140	5.6	8020	8.8	
1930	1450	1170	1170	3000	2330	2.3	5340	5.7	8340	9.2	
2060	1500	1210	1230	3190	2460	2.5	5650	6.1	8840	9.8	
2130	1550	1190	1270	3300	2530	2.5	5840	6.3	9140	10.1	
2210	1600	1180	1310	3420	2610	2.6	5040	6.5	9460	10.4	
2340	1650	1220	1370	3610	2740	2.7	6350	6.9	9960	11.1	
2410	1700	1200	1410	3710	2810	2.8	6530	7.1	10240	11.3	
2490	1750	1180	1450	3790	2890	2.8	6690	7.2	10480	11.5	
2620	1800	1230	1510	3920	3020	3.0	6940	7.5	10860	12.0	
2690	1850	1200	1550	3990	3090	3.0	7090	7.6	11080	12.1	
2840	1910	1250	1620	4140	3240	3.2	7380	7.9	11520	12.6	
2900	1960	1230	1650	4200	3300	3.2	7500	8.0	11700	12.7	
2970	2010	1210	1690	4270	3370	3.3	7650	8.1	11920	12.9	
3120	2060	1260	1760	4420	3520	3.5	7940	8.4	12360	13.4	
3250	2110	1310	1830	4550	3650	3.6	8210	8.8	12760	14.0	
3330	2160	1290	1870	4630	3730	3.7	8370	8.9	13000	14.1	
3480	2210	1350	1940	4780	3880	3.8	8660	9.3	13440	14.7	
3530	2260	1320	1970	4830	3930	3.8	8770	9.3	13600	14.8	
3610	2310	1290	2010	4910	4010	3.9	8930	9.4	13840	14.9	
3760	2360	1350	2080	5060	4160	4.1	9220	9.8	14280	15.5	
3810	2410	1320	2110	5110	4210	4.1	9330	9.8	14440	15.5	
3860	2460	1290	2130	5160	4260	4.1	9420	9.9	14580	15.6	
3910	2540	1260	2160	5210	4310	4.2	9530	9.9	14740	15.6	
4040	2840	1630	2220	5340	4440	4.4	9780	10.8	15120	17.2	
4110	2900	1610	2260	5410	4510	4.5	9930	10.9	15340	17.3	
4270	2950	1660	2340	5570	4670	4.6	10250	11.3	15820	17.9	
4320	3000	1640	2360	5620	4720	4.7	10340	11.3	15960	18.0	
4390	3050	1610	2400	5690	4790	4.7	10490	11.4	16180	18.1	
4550	3100	1660	2480	5850	4950	4.9	10810	11.8	16660	18.7	
4670	3150	1710	2540	5970	5070	5.0	11050	12.1	17020	19.2	
4750	3200	1690	2580	6050	5150	5.1	11210	12.2	17260	19.3	
4830	3250	1670	2620	6130	5230	5.2	11370	12.3	17500	19.5	
4950	3300	1720	2680	6250	5350	5.3	11610	12.6	17860	20.0	
5090	3350	1690	2720	6330	5430	5.4	11770	12.7	18100	20.1	
5180	3400	1750	2790	6480	5580	5.5	12060	13.1	18540	20.7	
5230	3450	1720	2820	6530	5630	5.5	12170	13.1	18700	20.7	
5310	3510	1700	2860	6610	5710	5.6	12330	13.3	18940	20.9	
5460	3560	1750	2930	6760	5860	5.8	12620	13.6	19380	21.5	
5510	3610	1730	2960	6810	5910	5.8	12730	13.7	19540	21.5	
5660	3660	1790	3030	6960	6060	6.0	13020	14.1	19980	22.1	
5720	3710	1760	3060	7020	6120	6.0	13140	14.1	20160	22.2	
5870	3760	1820	3140	7170	6270	6.2	13450	14.5	20620	22.8	
5940	3810	1790	3170	7240	6340	6.2	13580	14.6	20820	22.9	
5990	3860	1760	3200	7290	6390	6.3	13690	14.6	20980	23.0	
6070	3910	1730	3240	7370	6470	6.3	13850	14.7	21220	23.1	
6220	3960	1790	3310	7520	6620	6.5	14140	15.1	21660	23.7	
6270	4010	1760	3340	7570	6670	6.5	14250	15.1	21820	23.7	

All dimensions are in mm unless otherwise specified.

INDIANA DEPARTMENT OF TRANSPORTATION  
**CONCRETE ANCHOR**  
**TABLES**  
 JANUARY 1998

STANDARD DRAWING NO. 717-ANCH-01



/s/ Anthony L. Uremovich 1-02-98  
 DESIGN STANDARDS ENGINEER DATE

/s/ Donald W. Lucas 1-02-98  
 CHIEF HIGHWAY ENGINEER DATE

Source Sheet: ME1A