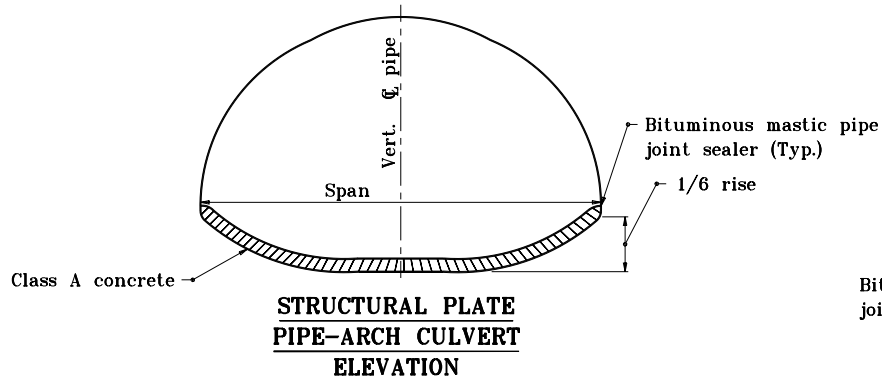
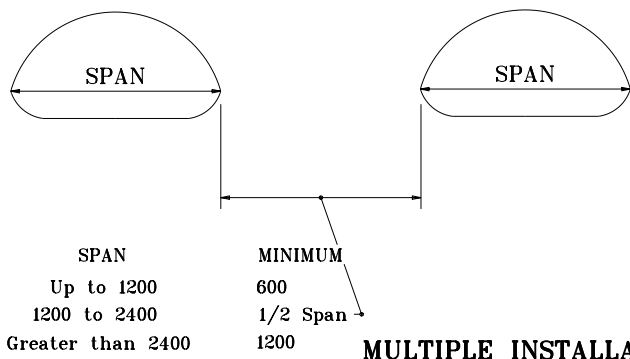


END STABILIZATION OF 75 x 25 CORRUGATED STEEL PIPE-ARCH SECTIONS ①

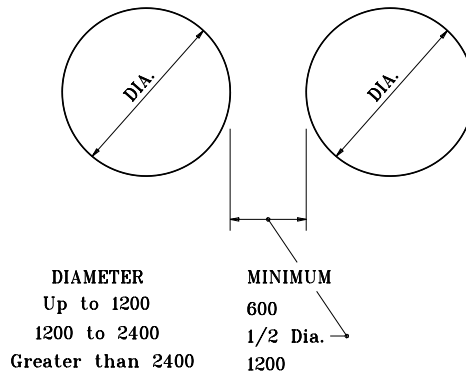


STRUCTURAL PLATE PIPE-ARCH CULVERT ELEVATION

CONCRETE FIELD PAVED INVERT DETAILS



MULTIPLE INSTALLATIONS



SPAN
Up to 1200
1200 to 2400
Greater than 2400

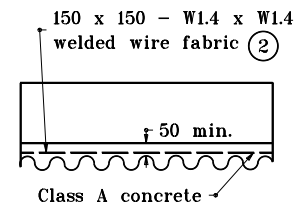
MINIMUM
600
1/2 Span
1200

DIAMETER
Up to 1200
1200 to 2400
Greater than 2400

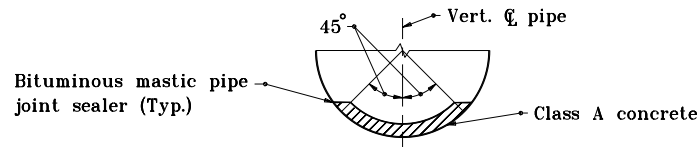
MINIMUM
600
1/2 Dia.
1200

GENERAL NOTES

- ① In order to maintain their manufactured shape, all 75 x 25 corrugated steel pipe-arch sections shall have wire ties attached at each end as shown in the detail. The wire ties shall be attached across the largest vertical and horizontal dimension of the pipe-arch. The wire ties shall be installed by the manufacturer and shall remain in place until the on-site installation is complete.
- ② Welded wire fabric shall be securely wired to every second circumferential bolt and every twelfth longitudinal bolt.



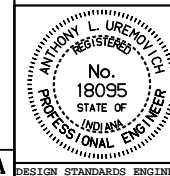
TYPICAL LONGITUDINAL SECTION



STRUCTURAL PLATE PIPE CULVERT

All dimensions are in mm unless otherwise specified.

INDIANA DEPARTMENT OF TRANSPORTATION
MISCELLANEOUS PIPE DETAILS
JANUARY 1998
STANDARD DRAWING NO. **715-PIPE-02**



/s/ Anthony L. Uremovich 1-02-98
DESIGN STANDARDS ENGINEER DATE

/s/ Donald W. Lucas 1-02-98
CHIEF HIGHWAY ENGINEER DATE

Source Sheet: **MPA**