

**75 mm x 25 mm CORRUGATED STEEL PIPE (RIVETED)  
HEIGHT OF COVER LIMITS (m)**

	AREA (m <sup>2</sup> )	DIAMETER (mm)	THICKNESS (mm)									
			1.63		2.01		2.77		3.51		4.27	
			MIN.	MAX.	MIN.	MAX.	MIN.	MAX.	MIN.	MAX.	MIN.	MAX.
	0.64	900	0.30	16.2								
	0.87	1050	0.30	13.7	0.30	17.1	0.30	25.6	0.30	30.5		
	1.13	1200	0.30	11.9	0.30	14.9	0.30	22.3	0.30	26.8		
	1.43	1350	0.30	10.8	0.30	13.4	0.30	19.9	0.30	24.0	0.30	26.6
	1.77	1500	0.30	9.4	0.30	11.9	0.30	17.7	0.30	21.3	0.30	23.8
	2.14	1650	0.30	8.5	0.30	11.0	0.30	16.2	0.30	19.5	0.30	21.6
	2.54	1800	0.30	7.9	0.30	10.1	0.30	14.9	0.30	17.7	0.30	19.8
	2.99	1950	0.30	7.5	0.30	9.3	0.30	13.8	0.30	16.6	0.30	18.4
	3.46	2100	0.30	6.7	0.30	8.5	0.30	12.8	0.30	15.2	0.30	17.1
	3.98	2250	0.34	6.4	0.30	7.9	0.30	11.9	0.30	14.3	0.30	15.8
	4.52	2400			0.30	7.3	0.30	11.0	0.30	13.4	0.30	14.9
	5.11	2550			0.32	7.1	0.32	10.5	0.32	12.7	0.32	14.1
	5.73	2700					0.34	9.8	0.34	11.9	0.34	13.1
	6.38	2850					0.36	9.4	0.36	11.3	0.36	12.6
	7.07	3000					0.38	8.8	0.38	10.7	0.38	11.9
	7.79	3150							0.39	10.3	0.39	11.4
	8.55	3300							0.41	9.8	0.41	10.7
	9.35	3450							0.43	9.4	0.43	10.4
	10.18	3600									0.45	9.8

**NOTE:**

1. The tabulated cover depths shall be measured from the bottom of the bituminous or concrete pavement to the top of the pipe.

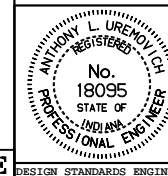
All dimensions are in mm unless otherwise specified.

INDIANA DEPARTMENT OF TRANSPORTATION

**PIPE HEIGHT OF  
COVER LIMITS**

JANUARY 1998

STANDARD DRAWING NO. 715-PHCL-13



/s/ Anthony L. Uremovich 1-02-98  
DESIGN STANDARDS ENGINEER DATE

/s/ Donald W. Lucas 1-02-98  
CHIEF HIGHWAY ENGINEER DATE

Source Sheet: NONE