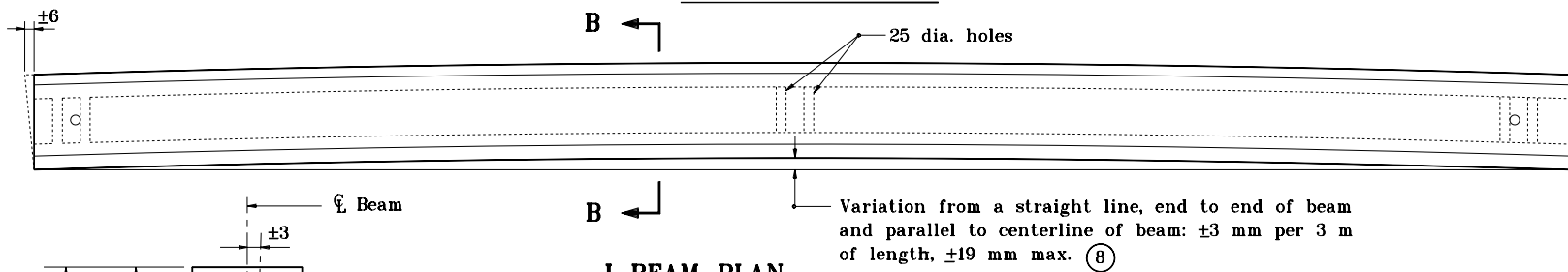
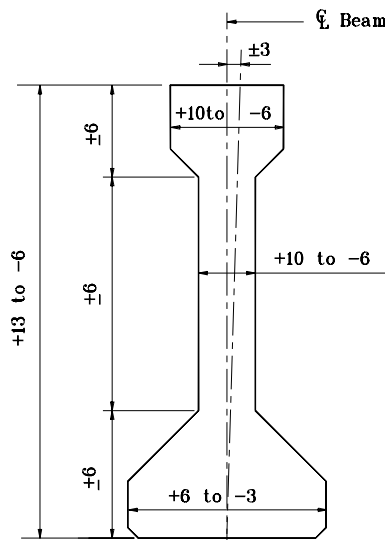


I-BEAM ELEVATION



I-BEAM PLAN



SECTION B-B

NOTES :

1. For General Notes see Standard Drawing 707-BPBF-03.
2. Center of gravity of depressed strand group at the end of beam shall not be more than ±13 mm.
- ③ Horizontal tolerance of beam ends for deviation from a true vertical with respect to top and bottom surfaces. Vertical tolerance shall be ±3 mm per 300 mm of beam height.
- ④ Tolerances for reinforcing bars for composite beam.
5. Tolerance of position of post-tensioning duct shall be ±6 mm.

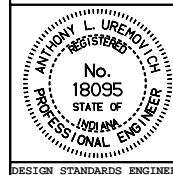
All dimensions are in mm unless otherwise specified.

INDIANA DEPARTMENT OF TRANSPORTATION

**FABRICATION TOLERANCES
PRESTRESSED I BEAM**

MAY 2000

STANDARD DRAWING NO. 707-BPBF-02



/s/ Anthony L. Uremovich 5-01-00
DESIGN STANDARDS ENGINEER DATE

/s/ Firooz Zandi 5-01-00
CHIEF HIGHWAY ENGINEER DATE

DESIGN STANDARDS ENGINEER