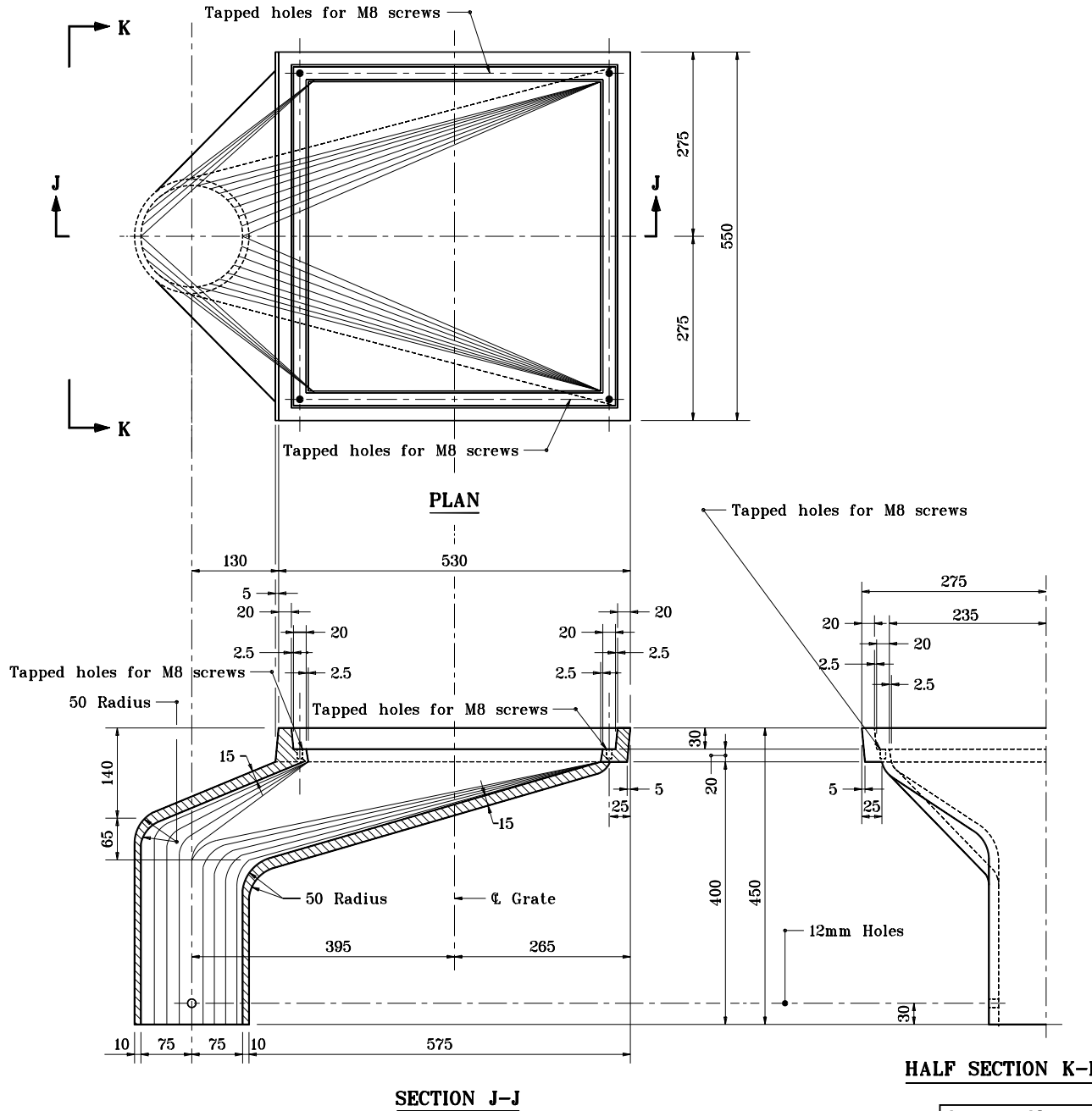


**GENERAL NOTES**

1. For attaching pipe to all drains, use M10x40 hex bolts with 2-M10 lock washers and 2-M10 nuts. (All parts galvanized)
2. The approximate weight of the drain is 109.8 kg.



All dimensions are in mm unless otherwise specified.

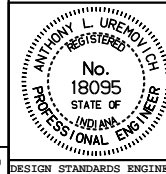
INDIANA DEPARTMENT OF TRANSPORTATION

**CASTING DETAILS**

**ROADWAY DRAIN TYPE OS**

SEPTEMBER 1994

STANDARD DRAWING NO. 704-BDCG-03



/s/ Anthony L. Uremovich 9-30-94  
DESIGN STANDARDS ENGINEER DATE

/s/ Donald W. Lucas 9-30-94  
CHIEF HIGHWAY ENGINEER DATE

Source Sheet: **D**