

GENERAL NOTES

1. See master plant list for specific dimensions applied to individual plants.
- ② 600 minimum distance for weed and mowing control applies to zone beyond stakes or mulch bed.
- A = Diameter of ball
- B = Depth of ball
- C = Diameter of pit
- D = Depth of pit
- E = Diameter of mulch bed
- F = Depth of mulch bed
- ③ See Standard Drawing 622-LSPL-04 for Rubber Hose Detail.

Total grass and weed control area for trees or shrubs

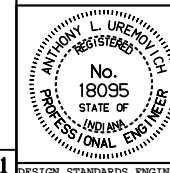
All dimensions are in mm unless otherwise specified.

INDIANA DEPARTMENT OF TRANSPORTATION

COMMONLY USED DIMENSIONS

APRIL 1995

STANDARD DRAWING NO. 622-LSPL-11



/s/ Anthony L. Uremovich 4-03-95
DESIGN STANDARDS ENGINEER DATE

/s/ Donald W. Lucas 4-03-95
CHIEF HIGHWAY ENGINEER DATE

Source Sheet: LS-1