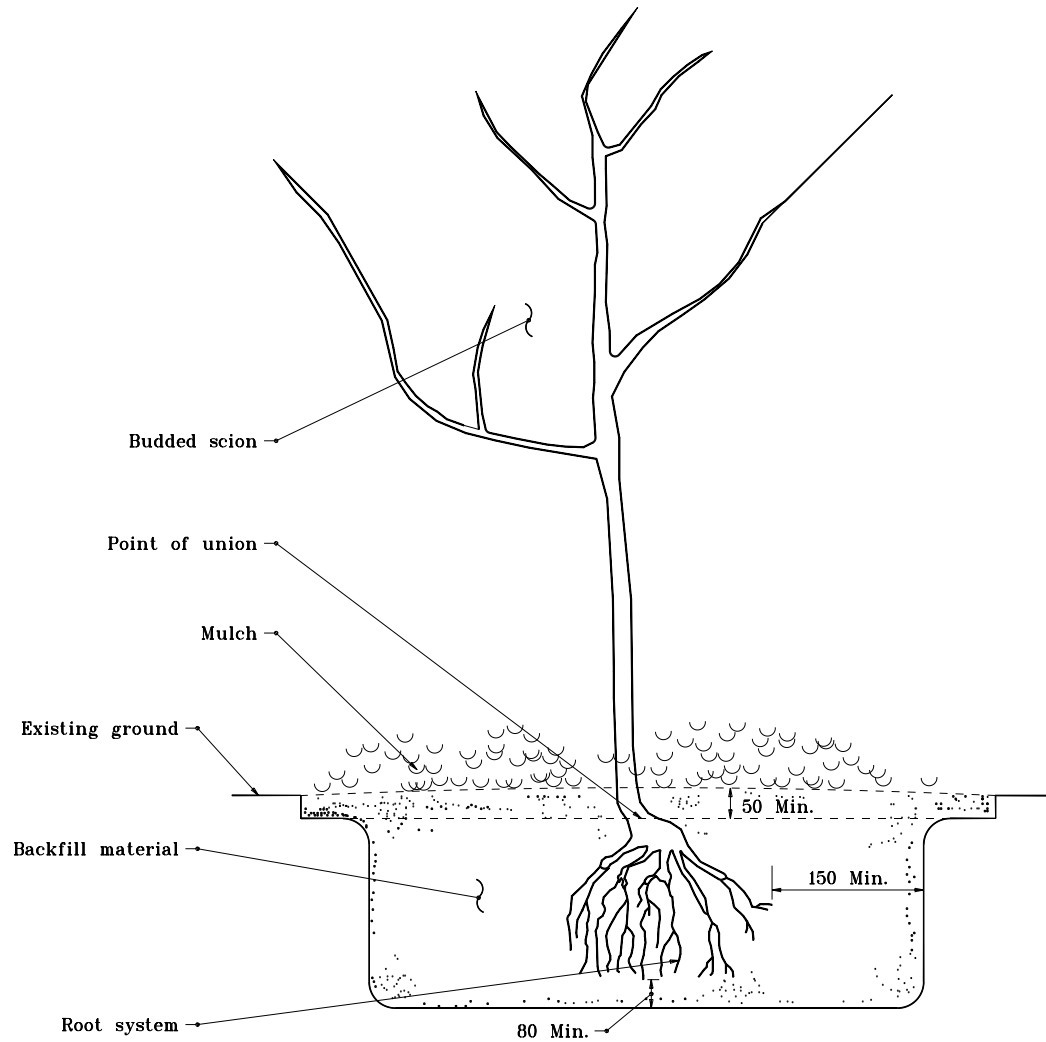


GENERAL NOTES

1. This detail to be followed in the planting of grafted bare root stock.



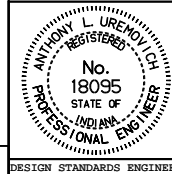
All dimensions are in mm unless otherwise specified.

INDIANA DEPARTMENT OF TRANSPORTATION

PLANTING GRAFTED TREE

APRIL 1995

STANDARD DRAWING NO. **622-LSPL-05**



/s/ Anthony L. Uremovich 4-03-95
DESIGN STANDARDS ENGINEER DATE

/s/ Donald W. Lucas 4-03-95
CHIEF HIGHWAY ENGINEER DATE

Source Sheet: **LS-1**