

SECTION A-A

LEGEND

- ③ Construction joint type D-1. See Standard Drawing 503-CCPJ-01 for details.
- ④ Longitudinal keyway joint, if pavement is PCCP. See Standard Drawing 503-CCPJ-04 for details.
- ⑧ Longitudinal contraction joint. See Standard Drawings 503-CCPJ-07 AND -08 for details.
- ⑨ 25 mm preformed joint filler
- ⑩ Ear construction type A. See Standard Drawing 605-ERCN-01 for details.
- ⑪ Ear construction type B. See Standard Drawing 605-ERCN-02 for details.
- ⑭ Integral concrete curb

L = Minimum longitudinal length of crossover

P = Travel lane or turn lane width

W = Width of median

V.C. = Vertical curve length

 = Stabilized shoulder

GENERAL NOTES :

1. The crossover length L is based on a 90° road intersection.
2. PCCP crossover shall be constructed if the cross road approach is concrete
HMA crossover shall be constructed if the cross road approach asphalt.
3. See Standard Drawings 610-PRCO-01A through -07 for crossover plans.

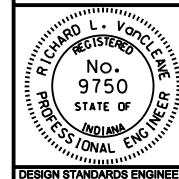
All Dimension are in mm unless otherwise specified

INDIANA DEPARTMENT OF TRANSPORTATION

PUBLIC ROAD CROSSOVER SECTION

MARCH 2003

STANDARD DRAWING NO. 610-PRCO-01



/s/ Richard L. VanCleave 3-03-03
DESIGN STANDARDS ENGINEER DATE

/s/ Richard K. Smutzer 3-03-03
CHIEF HIGHWAY ENGINEER DATE

DESIGN STANDARDS ENGINEER