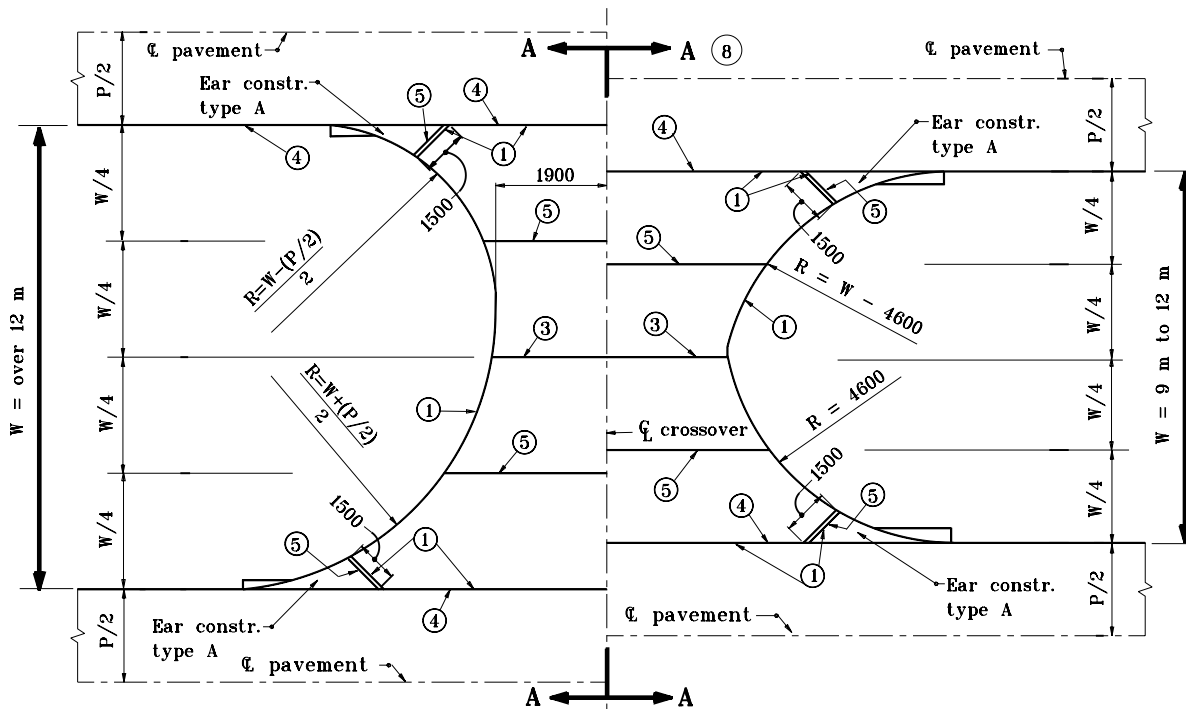


**PRIVATE DRIVE CROSSOVER PLAN FOR  $W = 2.3 \text{ m}$  to less than  $9 \text{ m}$**



**PRIVATE DRIVE CROSSOVER PLAN FOR  $W = 9 \text{ m}$  to over  $12 \text{ m}$**

**NOTES :**

- ① Thickened edge
2. See Standard Drawings:  
605-ERCN-01 for TYPE "A" ear construction  
605-ERCN-02 for TYPE "B" ear construction  
610-DRIV-17 for sections A-A and B-B
- ③ Contraction joint type D-1, see Standard Drawing 503-CCPJ-01 for details.
- ④ Keyway construction joint, see Standard Drawing 610-DRIV-16 for details.
- ⑤ 30 mm preformed joint filler
6. Private drive crossover shall be constructed of a flexible section unless otherwise directed by the engineer.
- ⑦ Integral concrete curb, see Standard Drawing 605-CCIN-01 for details.
- ⑧ For cross sections A-A and B-B see Standard Drawing 610-DRIV-18.

All dimensions are in mm unless otherwise specified.

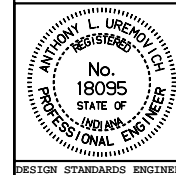
INDIANA DEPARTMENT OF TRANSPORTATION

**PRIVATE DRIVE CROSSOVERS**

**PLANS**

JANUARY 2000

STANDARD DRAWING NO. **610-DRIV-17**



/s/ Anthony L. Uremovich 1-03-00  
DESIGN STANDARDS ENGINEER DATE

/s/ Firooz Zandi 1-03-00  
CHIEF HIGHWAY ENGINEER DATE

DESIGN STANDARDS ENGINEER