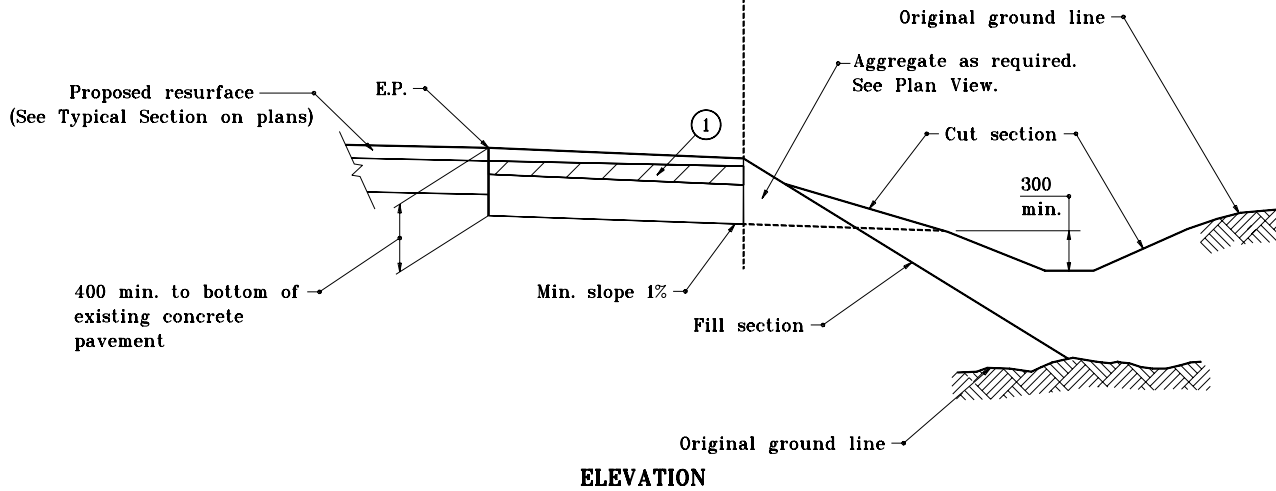
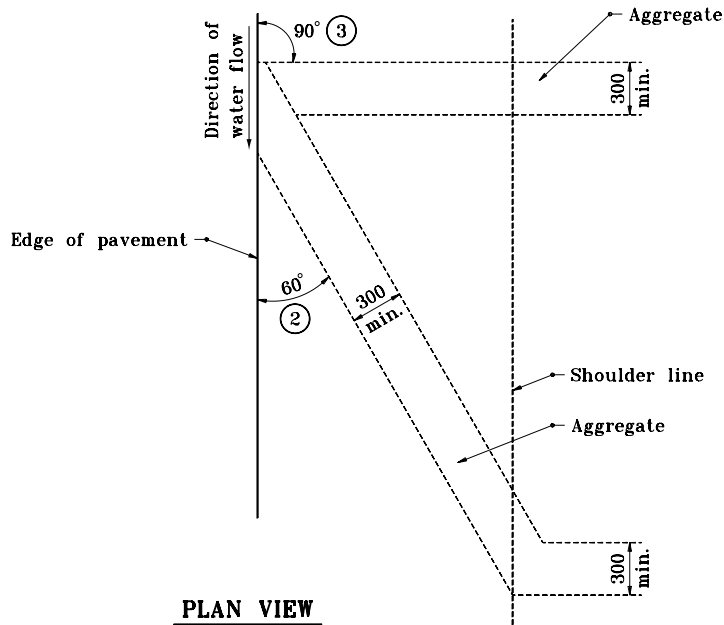


GENERAL NOTES

- ① 360 kg/m² HMA mixture for patching required. Width of patch to be equal to width of asphalt shoulder in place.
- ② For pavement grades of 1% or steeper.
- ③ For pavement grades of flatter than 1%.



SHOULDER DRAIN

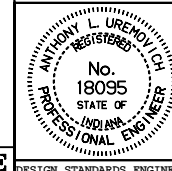
All dimensions are in mm unless otherwise specified.

INDIANA DEPARTMENT OF TRANSPORTATION

SHOULDER DRAIN

MAY 1998

STANDARD DRAWING NO. 608-SHDR-01



/s/ Anthony L. Uremovich 5-01-98
DESIGN STANDARDS ENGINEER DATE

/s/ Donald W. Lucas 5-01-98
CHIEF HIGHWAY ENGINEER DATE

Source Sheet: NONE