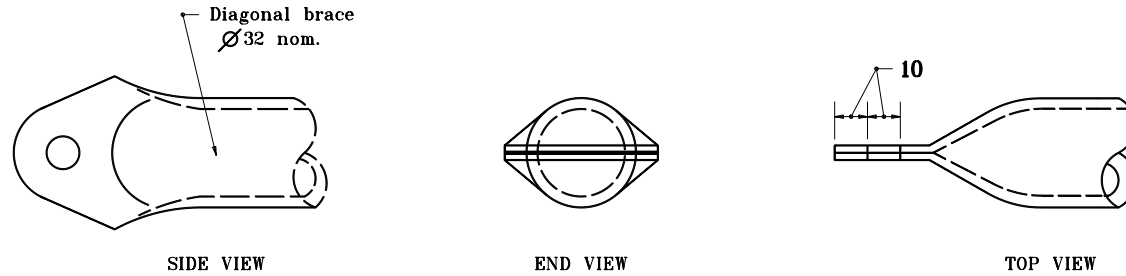
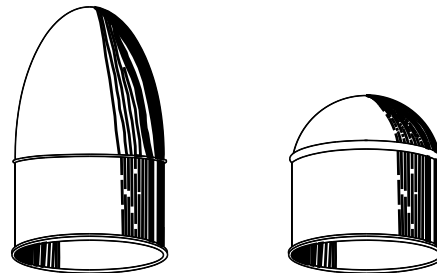


STANDARD METHOD



ALTERNATE METHOD

DIAGONAL BRACE CONNECTION



TYPICAL CAPS FOR TUBULAR POSTS

All dimensions are in mm unless otherwise specified.

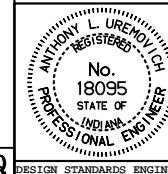
INDIANA DEPARTMENT OF TRANSPORTATION

BRACE CONNECTIONS

AND POST CAPS

APRIL 1995

STANDARD DRAWING NO. **603-FFTF-04**



/s/ Anthony L. Uremovich 4-03-95
DESIGN STANDARDS ENGINEER DATE

/s/ Donald W. Lucas 4-03-95
CHIEF HIGHWAY ENGINEER DATE

Source Sheet:

MQ

DESIGN STANDARDS ENGINEER