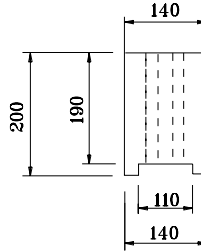
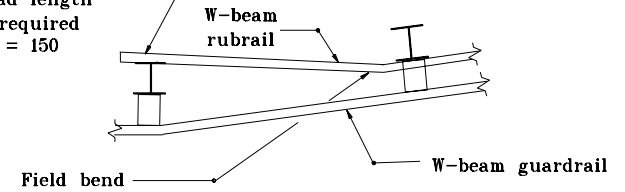


PLAN



WOOD BLOCK

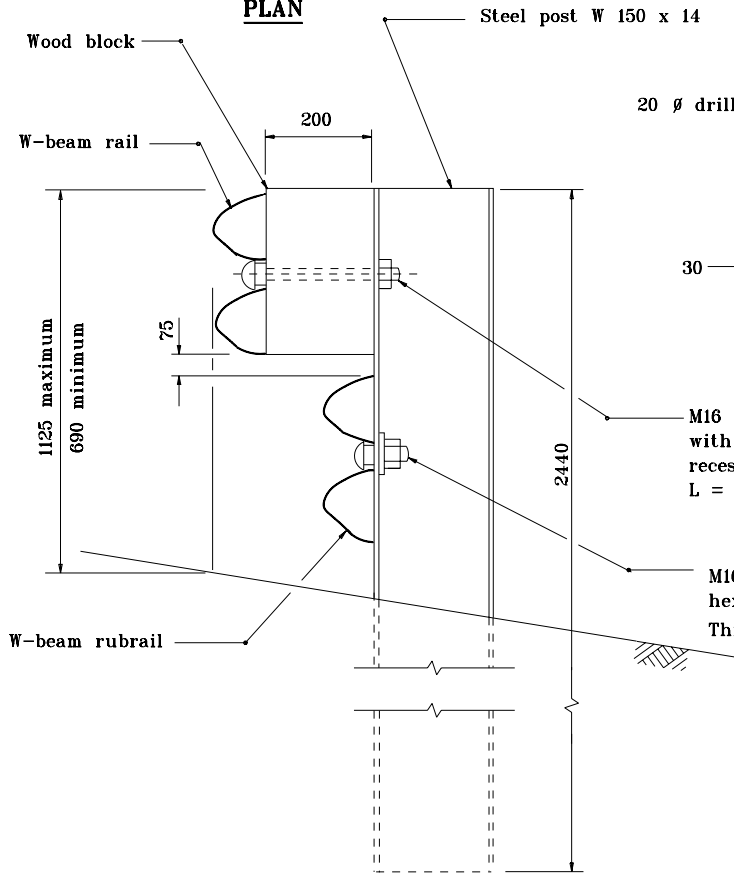
M16 hex bolt and nut
thread length
as required
L = 150



RUBRAIL TERMINATION DETAIL

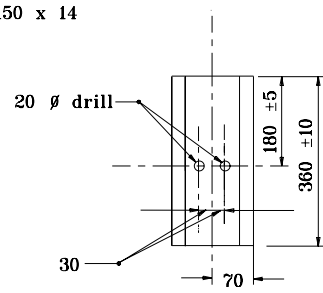
NOTES:

1. All posts shall be 2440 long and spaced at 1905.



ELEVATION

**STEEL POST AND WOOD BLOCK DETAIL
FOR WR-BEAM GUARDRAIL**



M16 button head guardrail bolt
with heavy hex nut with 25 \varnothing x 1.5 deep
recess both sides.
L = 255, thread length T (min.) = 100

M16 button head bolt with
hex nut recessed both sides
Thread length T (min.) = 50, L = 50

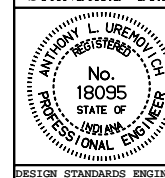
All dimensions are in mm unless otherwise specified.

INDIANA DEPARTMENT OF TRANSPORTATION

WR-BEAM GUARDRAIL

SEPTEMBER 2000

STANDARD DRAWING NO. 601-WBGA-06



/s/ Anthony L. Uremovich 9-01-00
DESIGN STANDARDS ENGINEER DATE

/s/ Firooz Zandi 9-01-00
CHIEF HIGHWAY ENGINEER DATE

DESIGN STANDARDS ENGINEER